

# WANCO

## PUBLIC SAFETY

### SOLUTIONS FOR LAW ENFORCEMENT & HOMELAND SECURITY



Архангельск (8182)63-90-72  
Астана (7172)727-132  
Астрахань (8512)99-46-04  
Барнаул (3852)73-04-60  
Белгород (4722)40-23-64  
Брянск (4832)59-03-52  
Владивосток (423)249-28-31  
Волгоград (844)278-03-48  
Вологда (8172)26-41-59  
Воронеж (473)204-51-73  
Екатеринбург (343)384-55-89  
Иваново (4932)77-34-06

Ижевск (3412)26-03-58  
Иркутск (395)279-98-46  
Казань (843)206-01-48  
Калининград (4012)72-03-81  
Калуга (4842)92-23-67  
Кемерово (3842)65-04-62  
Киров (8332)68-02-04  
Краснодар (861)203-40-90  
Красноярск (391)204-63-61  
Курск (4712)77-13-04  
Липецк (4742)52-20-81

Киргизия (996)312-96-26-47

Магнитогорск (3519)55-03-13  
Москва (495)268-04-70  
Мурманск (8152)59-64-93  
Набережные Челны (8552)20-53-41  
Нижний Новгород (831)429-08-12  
Новокузнецк (3843)20-46-81  
Новосибирск (383)227-86-73  
Омск (3812)21-46-40  
Орел (4862)44-53-42  
Оренбург (3532)37-68-04  
Пенза (8412)22-31-16

Россия (495)268-04-70

Пермь (342)205-81-47  
Ростов-на-Дону (863)308-18-15  
Рязань (4912)46-61-64  
Самара (846)206-03-16  
Санкт-Петербург (812)309-46-40  
Саратов (845)249-38-78  
Севастополь (8692)22-31-93  
Симферополь (3652)67-13-56  
Смоленск (4812)29-41-54  
Сочи (862)225-72-31  
Ставрополь (8652)20-65-13

Казахстан (772)734-952-31

Сургут (3462)77-98-35  
Тверь (4822)63-31-35  
Томск (3822)98-41-53  
Тула (4872)74-02-29  
Тюмень (3452)66-21-18  
Ульяновск (8422)24-23-59  
Уфа (347)229-48-12  
Хабаровск (4212)92-98-04  
Челябинск (351)202-03-61  
Череповец (8202)49-02-64  
Ярославль (4852)69-52-93

<http://wanco.nt-rt.ru> | | [wca@nt-rt.ru](mailto:wca@nt-rt.ru)

# Radar-Speed Trailer

- Bright, extra-large LED characters
- Easy to transport
- Changeable speed limit numbers
- See-through trailer design
- Battery powered and solar charged

Wanco Speed Trailers are commonly deployed in locations where obeying the speed limit is critical.

Wanco Speed Trailers have the largest portable speed display available today, perfect for school zones, neighborhoods and high-accident areas. Using integrated radar, the giant display shows motorists’ speed in 26-inch characters, flashing when a vehicle exceeds the user-set speed limit.

The overspeed message flashes “SLOW DOWN” or a selection of symbols, together with optional red-and-blue or white flashing lights. Speed is displayed in mph (one or two digits) or km/h (two or three digits).

A regulatory sign above the display features changeable speed-limit numbers for easy setup in any speed zone and is available in two sizes. The electronic display uses lenses and shades over the LEDs to produce superior visibility. The trailer’s see-through design puts pedestrians in view, improving their safety. A solar-based battery charging system provides long run times.

## Brief Specifications

Deployed footprint, L×W	56×61 in	143×154cm
Operating height	123 in	312cm
Traveling height	91 in	231cm
Weight, approx.	870lb	395kg
Speed display font size	26 in	66cm
Speed limit sign size	24×30in	61×76cm
Power	Batteries, solar	

Model codes on page 14

## Features

- Extra-large full-matrix display
- 26-inch LED characters with optical lenses and sun shades for superior visibility
- Selectable speed-limit setting
- Configurable units, mph or km/h
- Approach-only K-band radar detects vehicles at up to 1,000 feet (305 meters)
- Radar is FCC approved and CE compliant
- Regulatory speed-limit sign rises to legal height for increased visibility
- Changeable digits for speed-limit sign stored in battery box
- All welded structural steel trailer with heavy-duty bolt-on fenders
- Stainless steel hardware where practical
- Durable powder-coat finish
- Compact trailer can be towed by most vehicles
- Drawbar can be removed for added security and smaller footprint
- Battery powered and solar charging
- Maintenance-free AGM batteries
- All wiring is protected or hidden — no exposed wires or cables
- Locking control box and battery compartment
- Options include full-color touchscreen controller, Traffic Data Classifier System (see page 3), red/blue or white flashers, strobe and a choice of regulatory signs



Compact Speed Trailer

# Traffic Data Classifier System

**Collects and classifies traffic data**

**Nonintrusive — no wires, loops or hoses**

**Analytic graphing software**

**Data analysis for any purpose**

**Remote access with optional modem**

The Wanco Traffic Data Classifier System provides a safe method for monitoring and analyzing traffic patterns.

The system includes a data collector and analytic software. The collector is installed on a Wanco Speed Trailer or Wanco Message Sign and employs highly accurate side-fire radar to measure vehicle count, speed, direction and type. Completely non-intrusive, the data collector uses no wires, loops or hoses. The Wanco Traffic Analyzer program, installed on a user-supplied computer, downloads traffic data and presents it in interactive graphs that are easy to customize, making interpretation a simple task.

As an integrated component on the Wanco Speed Trailer or Wanco Message Sign, the data collector can operate with or without the sign turned on. With an optional Wanco cellular modem installed, data from the collector can be retrieved remotely.

## Features

Nonintrusive, no disturbance of traffic flow

Captures both approaching and departing traffic

Side-fire radar provides high accuracy

Examine lane flow, speeds and density

Investigate and validate complaints from residents and contractors

Use real data to make decisions and recommendations for effectively managing traffic

Prove the need for traffic controls

Decide when to put police patrols on the roads

Most effective for two-lane roads

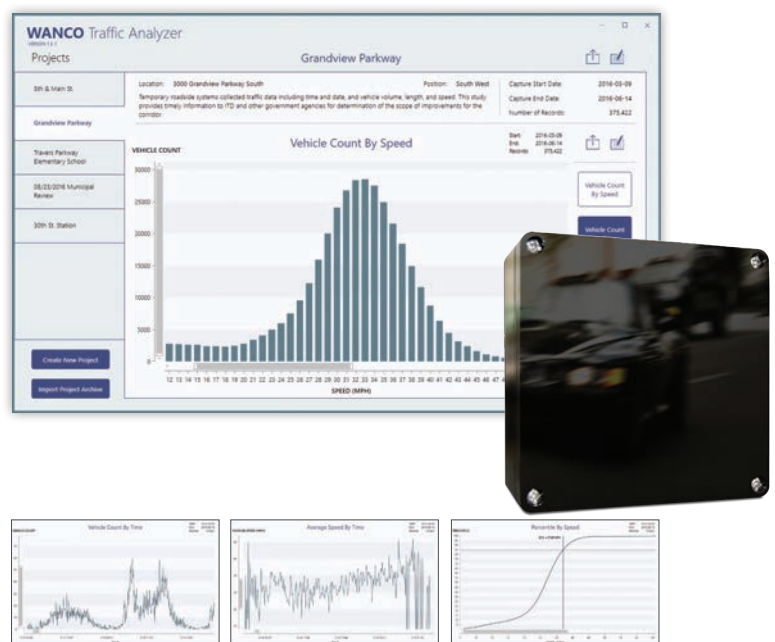
Stores millions of vehicles in internal memory

Download a million records in minutes

Traffic Analyzer program provides charts that can be exported for presentations and reports

Interactive charts can be customized for desired data segments

Traffic Analyzer is easy to learn and use





# Variable Message Signs

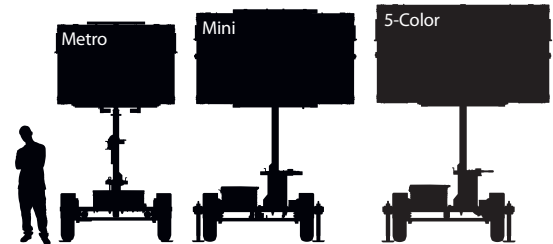
Easy to tow and deploy quickly by one person

Every sign has an onboard controller

Easiest programming in the industry

Low power consumption with long run times

Many sizes and configurations to choose from



Wanco Variable Message Signs are great for traffic control, checkpoints, emergencies, crowd direction and special events.

These signs are smaller versions of Wanco full-size signs, with the same features and performance. Metro™ Signs are our smallest models, easy to position where larger signs may not fit—on sidewalks, next to buildings, and along narrow shoulders and medians. Metro Signs and the larger Mini Matrix Signs can display messages as text, graphics or a combination of both. Mini Three-Line Signs display three rows of alphanumeric characters. Color Matrix Signs let you combine graphics and text in five colors—red, blue, green, amber and white—to make bright, colorful messages that stand out.

Ultra-bright and highly legible, easy to transport and easy to deploy, a choice of sizes, displays, functions and other options make Wanco Message Signs extremely versatile.



## Features

All welded structural steel trailer with heavy-duty bolt-on fenders  
 Stainless steel hardware where practical  
 Durable powder-coat finish  
 Low weight, can be towed by most vehicles  
 Standard tow hitch for easy transport  
 Sign on telescoping tower rotates 360 degrees for optimal positioning  
 One person can easily raise, lower and rotate the sign  
 Onboard controller eliminates the need for an external computer or controller  
 Full-color touchscreen controller on all models  
 Easiest programming in the industry  
 Preprogrammed text messages, symbols and graphics simplify message creation  
 Internal clock facilitates built-in schedule programming  
 Multiple alphanumeric fonts on all matrix signs  
 Optical lenses and sunshades increase visibility and improve performance  
 Multi-level password protection limits access to control software  
 Control box can be locked to prevent access  
 Solar panels charge batteries automatically without intervention  
 Maintenance-free AGM batteries  
 Battery box can be locked to prevent access

## Brief Specifications

	Metro™ signs				Matrix sign		3-line sign		Color sign	
	Medium		Large		Mini		Mini		Mini	
Deployed footprint, L × W	55 × 68 in	139 × 172 cm	55 × 68 in	139 × 172 cm	143 × 79 in	362 × 201 cm	143 × 79 in	362 × 201 cm	143 × 79 in	362 × 201 cm
Display cabinet, W × H	71 × 48 in	180 × 122 cm	88 × 48 in	222 × 122 cm	96 × 55 in	244 × 140 cm	96 × 55 in	244 × 140 cm	104 × 59 in	264 × 150 cm
Operating height	134 in	340 cm	134 in	340 cm	142 in	361 cm	142 in	361 cm	145 in	367 cm
Travel height	92 in	232 cm	92 in	232 cm	103 in	262 cm	103 in	262 cm	104 in	264 cm
Weight, approx.	1400 lb	635 kg	1500 lb	680 kg	1580 lb	717 kg	1580 lb	717 kg	1763 lb	800 kg
Display	48 × 30 pixels		60 × 30 pixels		48 × 27 pixels		3 lines of 8 characters		60 × 32 pixels	
Fonts	12		12		12		1		12	
Power	Batteries, solar		Batteries, solar		Batteries, solar		Batteries, solar		Batteries, solar	

## Remote Communications

**Add optional Wanco Remote Communications with built-in precision GPS to any Wanco message sign**  
 Remote control of sign messages  
 Remote monitoring and diagnostics  
 Wanco Fleet Manager service for an entire fleet or a single sign  
 4G LTE gateway  
 Compatible with NTCIP central systems  
 Compatible with All Traffic Solutions® TrafficCloud<sup>SM</sup>

## Radar

**Add optional Wanco Radar to any Wanco message sign for vehicle speed feedback on sign**  
 Radar senses the largest, nearest mass moving toward it  
 Detection range up to 1000 feet (305m)  
 Includes output for real-time speed display on message sign

## Traffic Data Classifier

**Add optional Traffic Data Classifier System to any Wanco message sign for data analysis and reporting**  
 Side-fire radar provides high accuracy  
 Records vehicle count, speed, direction and type with timestamp for upload to Wanco Traffic Analyzer program  
 See page 3 for details

# Remote-Video Monitoring System

**Live video for real-time monitoring**

**Remote control of camera and sign**

**Traffic, radar\* and GPS data**

**Easy to use**

**Portable and wireless**

The Wanco Remote-Video Monitoring System adds live video and remote control to Wanco Mini Message Signs.

Wanco's RVMS provides remote control of both the sign and the camera from your office, a command center or any Internet-enabled location. Change the message displayed on the sign and pan, tilt and zoom the camera. Monitor traffic flow and road conditions, use radar\* to view traffic speeds, use GPS data to map the system's location, monitor crowds at events and more, all in real time.

The camera tower and message board can be raised and lowered independently at the sign, letting you use either one without the other turned on. The camera tower retracts fully, guarding against damage during transport and storage.

## Brief Specifications\*\*

Camera models <sup>†</sup>	Axis® P-Series and Q-Series with HD capability
Camera type	Clear-domed, pan-tilt-zoom (PTZ), automatic day/night
Zoom	Optical and digital zoom
Network security	Selectable, nine levels of protection
Communications	High-speed 4G LTE
Software	Wanco PWZ Logger for remote access and control
Camera tower	Electrically operated winch, telescoping tower rises to 66 inches (168cm) above top of message sign board, max. camera height from ground is 18 feet (5.5 meters)

\*Radar is optional equipment.

\*\*Subject to change with technology advancements.

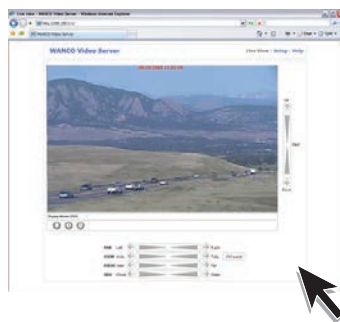
<sup>†</sup>Many camera options available. For more information, contact the factory.



Mini RVMS

Model codes on page 14

Live MPEG video and PTZ camera control



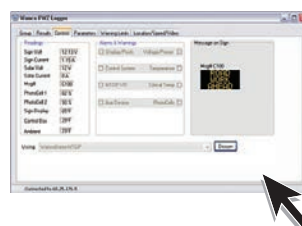
Live radar-based traffic speed



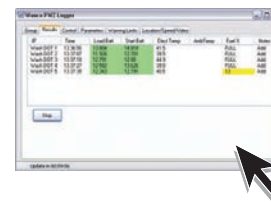
1-click link to GPS location on Google® Maps



Real-time message sign monitoring and control



Real-time fleet health monitoring



## Features

- Monitor vehicle and pedestrian traffic in real time
- Use Wanco software and your computer for remote access
- Remote control of camera and message sign
- Pan, tilt and zoom the day/night camera
- Camera can record video to user-supplied SD card
- Remotely access live or recorded MPEG video stream
- Change the message displayed on the sign
- View system health and related data
- View radar and GPS data\*
- High-speed 4G LTE cellular router
- NTCIP-compliant communications

## Remote access

RVMS remote communications components include a 4G cellular router, the message sign's control software and optional accessories. Internal connections at the message sign are wired and configured at the factory.

Client software installed on your computer lets you use a standard Internet browser to "call up" the cellular router. The RVMS video server provides access to the camera, while the router enables access to the message sign's NTCIP-compliant control system.

# Diesel PVS System

**Portable video surveillance and more**

**Industry leading tamper-resistance**

**Designed for use in unprotected areas**

**Local and remote control**

**Provides unmanned 24/7 presence**

Wanco's flagship Diesel PVS System features an industrial-grade power plant that ensures reliable, continuous operation.

The Diesel Portable Video Surveillance (PVS) system is completely self-contained with its own onboard power, recording and communications systems. No external power source or connections are needed, and city infrastructure modifications are also unnecessary. Wanco PVS deploys quickly and easily, and almost anyone can use it without extensive training.

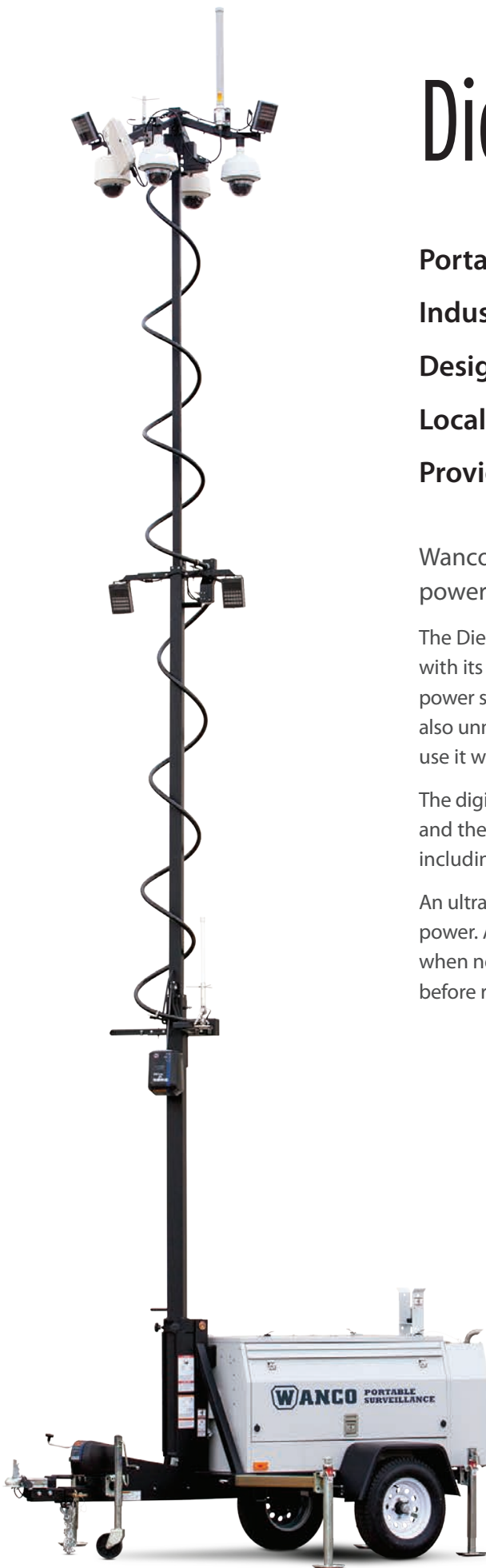
The digital video recording system allows local and remote viewing and recording, and the PVS advanced-analytics package offers a wider range of functionality, including alarms and telemetry notifications.

An ultra-quiet, low-speed, diesel engine charges the batteries that provide system power. An automatic start/stop feature conserves fuel by running the engine only when needed for keeping the batteries fully charged. Typical run time is 30 days before refueling.

## Brief Specifications

Typical camera*	Axis® Q60 Series clear-domed, pan-tilt-zoom (PTZ) day/night camera
Camera height	30ft (9.14m)
Power system	Battery-powered Solar or hybrid diesel charging system
Popular options	Choice of cameras Multiple cameras Choice of wireless communications (4G LTE, RF, Wi-Fi®, WLAN, 802.11 and more) Onboard digital recording IR and hybrid IR/LED lighting Public address (PA) speakers Flashing beacon lights

\*Many camera options available. For more information, contact the factory.



Diesel PVS



# Mini Solar Surveillance System

**Integrated camera and electronics**

**20-foot vertical tower**

**Year-round autonomous operation**

**Compact and easy to transport**

**Silent operation**

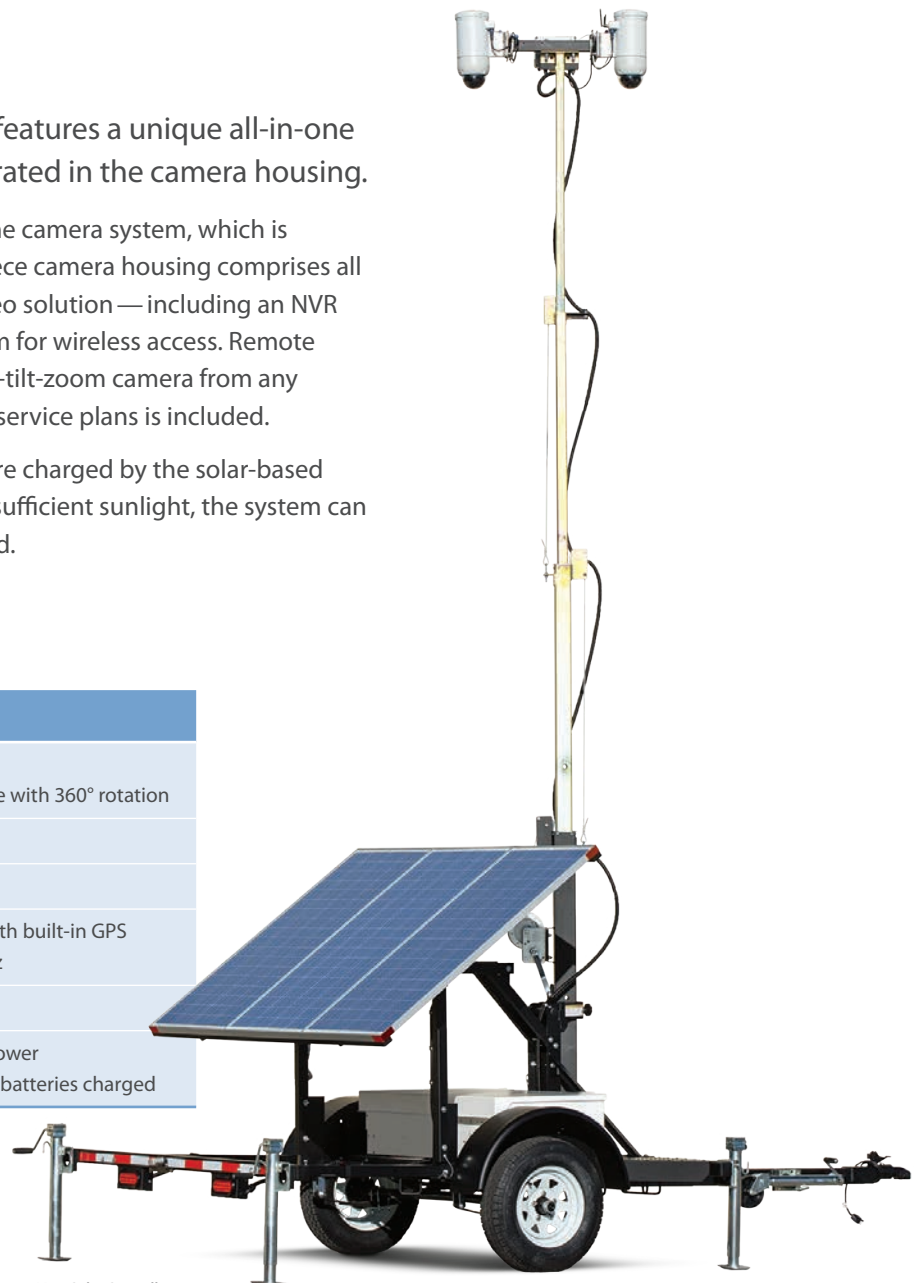
Wanco's Mini Solar Surveillance System features a unique all-in-one design in which all electronics are integrated in the camera housing.

At the top of the 20-foot telescoping tower is the camera system, which is specifically designed for outdoor use. A one-piece camera housing comprises all electronics for this remotely accessible live-video solution — including an NVR for storing recorded video and a cellular modem for wireless access. Remote control lets you view video and control the pan-tilt-zoom camera from any Internet-connected device. A choice of cellular service plans is included.

System power is provided by batteries, which are charged by the solar-based charging system. In a typical deployment with sufficient sunlight, the system can run continuously and independently year-round.

## Brief Specifications

Cameras	One or two IP-network cameras Cameras are day/night PTZ dome style with 360° rotation
Video resolution	1028×596 or HD 1080p
Recording	Onboard solid-state NVR
Communications	High-speed 4G LTE cellular modem with built-in GPS LAN Wi-Fi® connectivity, 2.4 or 5.8 GHz
Camera height	20 ft (6.1m)
Power system	Maintenance-free batteries provide power Automatic solar-based charging keep batteries charged



Mini Solar Surveillance

# LED Balloon Light

- Glare-free 360° illumination
- Reduced and diffused shadows
- Steerable heavy-duty cart with 16-foot tower
- Independent inverter power generator
- Optional 12-foot tripod stand

Wanco Balloon Lights are perfect for nighttime operations by fire rescue, EMS, police and military. Balloon lights provide diffused light that reduces shadows and eliminates glare, making night work safer and easier on the eyes. Wanco Balloon Lights light up large areas even at low operating heights, and with integral outriggers deployed the heavy-duty steel base and telescoping mast keep the balloon light stable.

Set-up is easy with a built-in handle, steerable wheels, large flat-free all-terrain tires and foot-operated parking brake. A hand-operated winch raises the tower. The light goes on and the balloon inflates with a single switch, and the light operates at any height.

A portable inverter generator provides clean power, safe for sensitive electronics. The generator attaches to the cart with an adjustable strap and can be removed and used independently. The light can be plugged into any standard 120-volt AC power outlet.

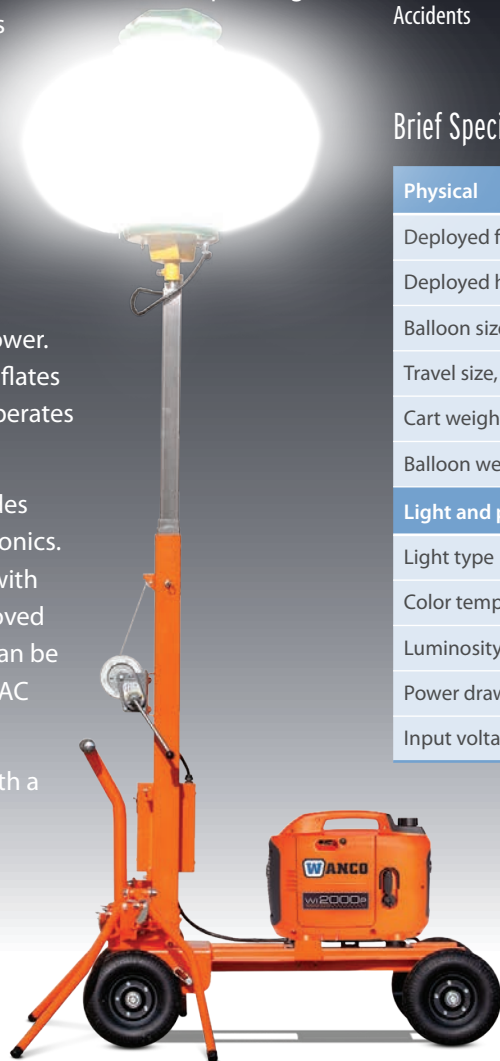
The balloon light is also available with a lightweight tripod stand.

## Common applications

- |                   |                            |
|-------------------|----------------------------|
| Checkpoints       | Crime scene investigations |
| Road blocks       | Border incidents           |
| Special events    | Search and rescue command  |
| Traffic direction | Base camps                 |
| Accidents         | Natural disasters          |

## Brief Specifications

Physical		
Deployed footprint, L x W	60 x 72 in	152 x 183 cm
Deployed height, max.	18 ft 5 in	5.61 m
Balloon size, inflated, W x H	40 x 29 in	100 x 73 cm
Travel size, L x W x H	48 x 32 x 96 in	122 x 81 x 244 cm
Cart weight, approx.	300 lb	136 kg
Balloon weight, approx.	22 lb	10 kg
Light and power		
Light type	LED	
Color temperature	5000K	
Luminosity	65,000 lumens, 360° beam angle	
Power draw	650 watts	
Input voltage	120/240 Vac	



Balloon Light with Inverter Generator

# Solar Light Towers

**Silent operation**

**Four high-output LED lights on 20-foot tower**

**Automatic and manual operating modes**

**Battery powered with automatic solar charging**

**Maintenance-free AGM batteries**

Wanco Solar Light Towers provide light instantly—without noise and without an external power supply.

Powered by batteries that are charged by an automatic solar-based charging system, these eco-friendly light towers are silent, produce no fumes and require virtually no maintenance. During daylight hours the sun recharges the batteries, and at night the lights use battery power to light up a large area.

Wanco Solar Light Towers use highly efficient LED lights that are surprisingly bright. Four lights are more than enough for large sites up to 9,900 square feet. LED lighting is ideal for emergencies, including traffic accidents, search and rescue operations, firefighting and natural disasters.

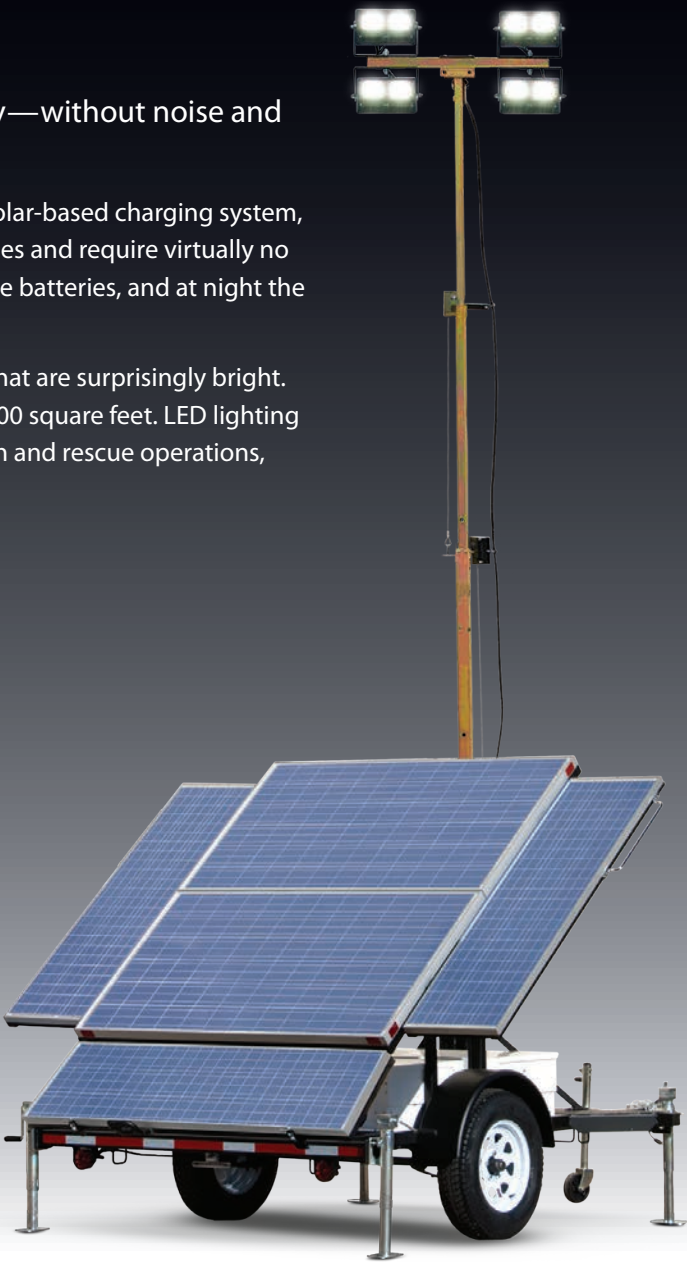
## Brief Specifications

Physical		
Deployed footprint, L × W	183 × 87 in	465 × 221 cm
Operating height, max. <sup>[1]</sup>	20 ft	6.1 m
Traveling height	108 in	273 cm
Weight, approx.	1960 lb	889 kg
Lights and power		
Lights	4 adjustable LED fixtures	
Luminosity	8590 or 13,680 lumens per fixture 34,360 or 54,720 total lumens <sup>[2][3]</sup>	
Power draw	60 or 100 watts per fixture <sup>[2][3]</sup>	
Batteries	400 or 800 Ah total capacity <sup>[3]</sup>	
Solar input	600, 900 or 1050 watts <sup>[3]</sup>	

<sup>1</sup>Adapted on large trailer, not shown, reaches 30 feet (9.14 m).

<sup>2</sup>Due to improvements in LED technology, light fixtures are subject to change.

<sup>3</sup>Depending on model and selected options.



Medium Solar Light Tower

# Diesel Light Towers

**Vertical and laydown-tower models**

**Fast, easy deployment**

**Metal halide, LED or balloon lights**

**Lights operate at any height**

**Proven design**

Wanco Diesel Light Towers are perfect for any application where portable lighting is required.

Portable lighting is ideal for wide-area outdoor lighting in a variety of applications, including DUI checkpoints, accident investigation, emergency response and more.

These light towers are durable, highly functional and easy to use. Each light can be aimed independently without the use of tools, and the lights stay in place once positioned. Two winches raise and extend the tower. The tower rises up to 30 feet and rotates 360 degrees, eliminating the need to move the trailer frequently. The lights can operate at any height.

The power system includes a choice of premium brand, low-RPM diesel engines and high-quality four-pole generators.

## Brief Specifications

Deployed footprint, L x W	127 x 112 in	321 x 285cm
Operating height, max.	30 ft	9.14m
Traveling height	66 in	168cm
Weight, approx.	1800 lb	815kg
Lamps	Four 1000-watt metal halide lamps	
Luminosity, initial	110,000 lm per lamp 440,000 lm total	
Power output	6000 watts	
Power supply	Low-RPM Tier 4 Final diesel engine	

## Features

High-intensity parabolic reflectors provide bright, uniform illumination

Each light fixture can be aimed independently without tools

Tower rotates 360 degrees and lights operate at any height

Lockable, weather-resistant, steel cabinet protects components

All welded structural steel trailer with bolt-on heavy-duty steel fenders and stainless steel hardware where practical

Durable powder-coat finish

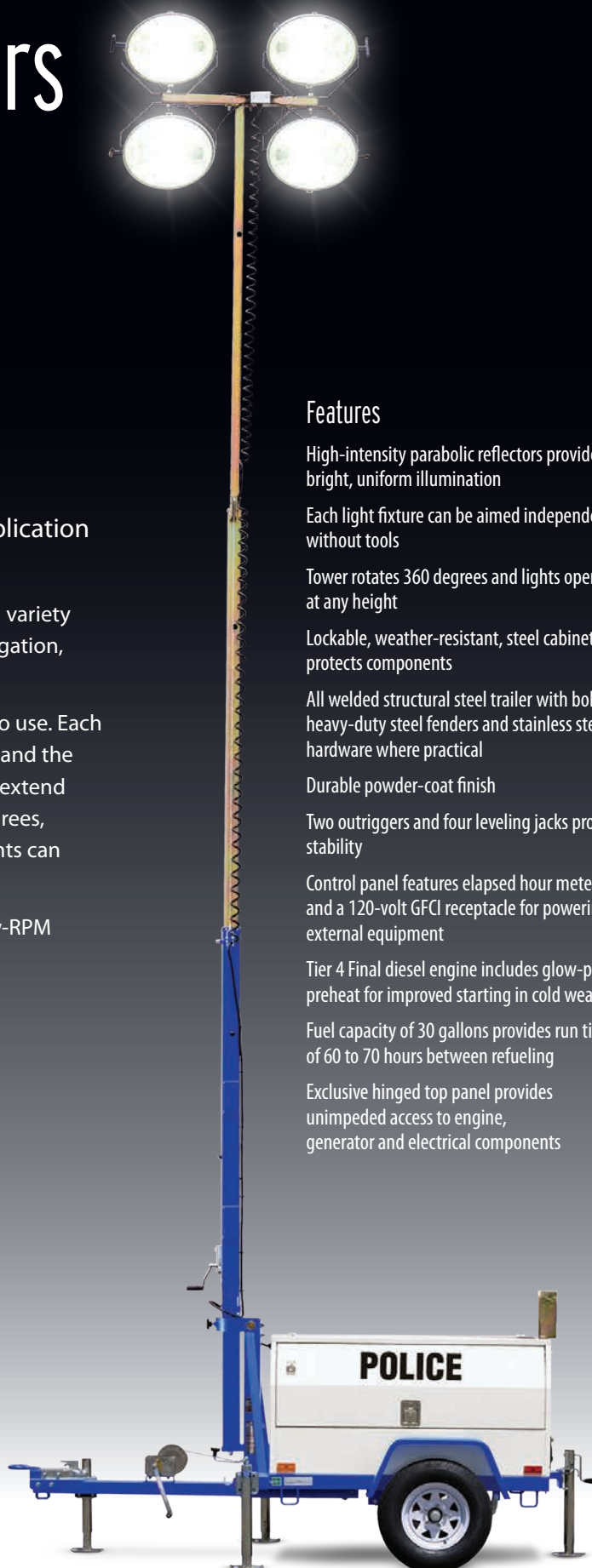
Two outriggers and four leveling jacks provide stability

Control panel features elapsed hour meter and a 120-volt GFCI receptacle for powering external equipment

Tier 4 Final diesel engine includes glow-plug preheat for improved starting in cold weather

Fuel capacity of 30 gallons provides run times of 60 to 70 hours between refueling

Exclusive hinged top panel provides unimpeded access to engine, generator and electrical components



Diesel Light Tower

Model codes on page 14



# Compact Diesel Light Towers

## Compact design

## Easy to tow and deploy

## Aim lights from the ground

## LED lights

## Durable all-steel body

Wanco Compact Light Towers deploy quickly and easily, and feature bright and powerful LED lights.

Equipped with state-of-the-art technology, their small size doesn't sacrifice performance. The 24½-foot tower is the tallest of any compact light tower, and Wanco's high-efficiency LED lights provide superior illumination for 10 years or more without ever replacing a light bulb. And the light tower's large fuel tank ensures nearly 200 hours of service before refueling.

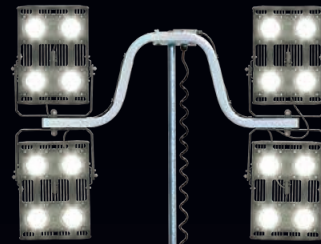
Each light can be aimed independently while standing on the ground, before raising the tower—no ladder needed, no need to climb on the trailer—and the always vertical tower is easy to raise and lower with a single, dual-handle manual winch or a power winch. The tower rotates nearly 360 degrees, and the lights operate at any height.

Portable lighting is ideal for wide-area outdoor lighting in a variety of applications, including DUI checkpoints, accident investigation, emergency response and more.

## Brief Specifications

Deployed footprint, L x W	129 x 111 in	327 x 281 cm
Operating height, max.	24½ ft	7.5 m
Traveling height	93 in	237 cm
Weight, approx.	1965 lb	891 kg
Lights	Four 350-watt LED fixtures*	
Luminosity, continuous	49,000 lm per fixture 196,000 lm total*	
Power output	6000 watts	
Power supply	Low-RPM Tier 4 Final diesel engine	

\*Due to improvements in LED technology, light fixtures are subject to change. Other light options also available. For more information, contact the factory.



## Features

Cost-effective to own and operate

Compact design takes up less space

LED lights are instant-on with no warm-up or ~~cool-down~~ needed

Each light fixture can be aimed independently without tools

Aim lights from the ground without a step

Tallest of all compact light towers

Vertical tower rises and lowers with a single winch

Tower rotates 360 degrees and lights operate at any height

All-steel cabinet and structural steel frame for durability and longevity

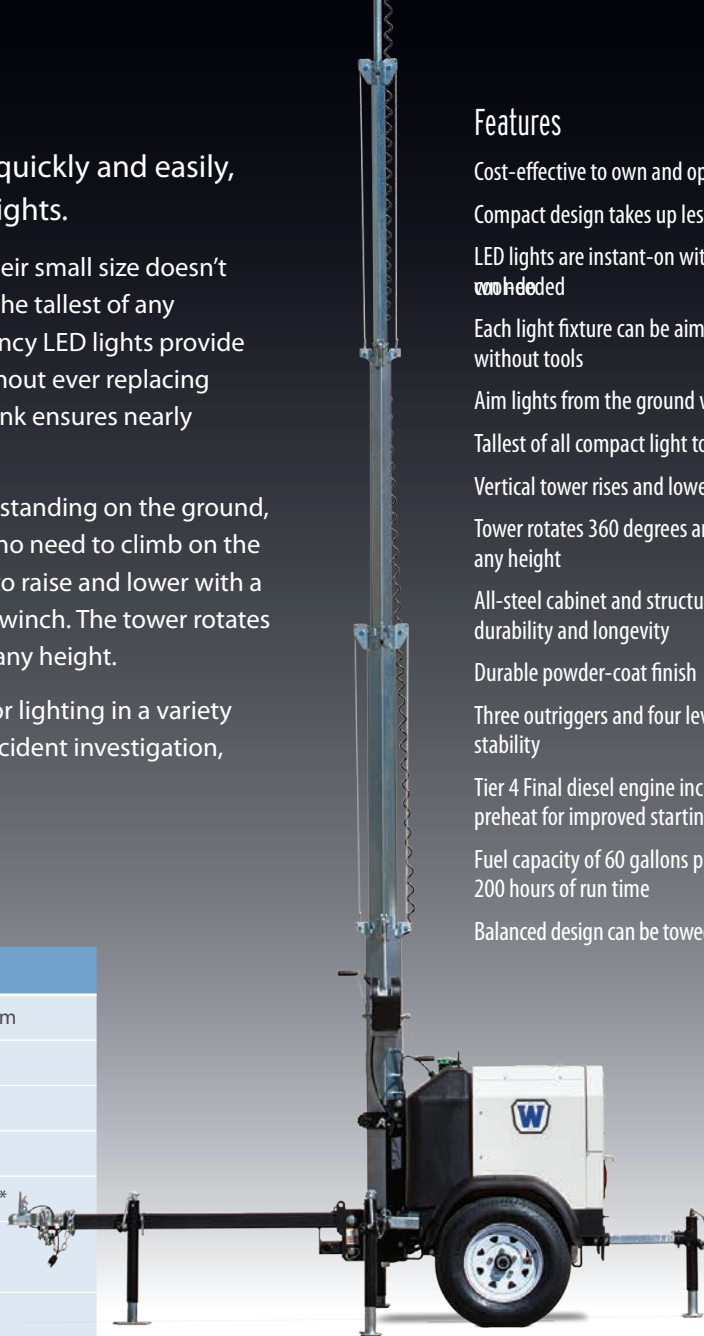
Durable powder-coat finish

Three outriggers and four leveling jacks provide stability

Tier 4 Final diesel engine includes glow-plug preheat for improved starting in cold weather

Fuel capacity of 60 gallons provides almost 200 hours of run time

Balanced design can be towed by nearly any vehicle



Compact Light Tower

# Product Model Codes

## Speed Trailer



Radar-Speed Trailer  
WSDT3-SPD



Metro™ Medium  
WVTMM-M-PD



Metro Large  
WVTMM-L-PD



Mini Matrix Sign  
WVTM-PD



Mini Three-Line Sign  
WVT3-PD



5-Color Matrix Sign  
WVTM-5C-PD

## Variable Message Signs

## Video Surveillance



Mini RVMS  
WVTMC-PD



Diesel PVS  
WCTY



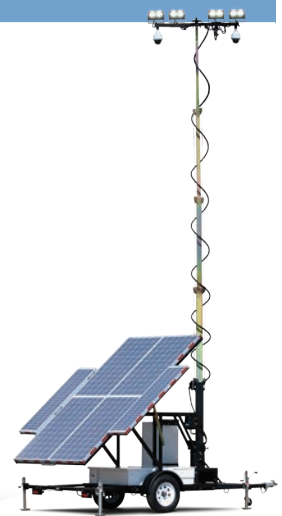
Solar PVS  
WCTB4S



Mini Solar Surveillance  
WCTS-Mini



Solar Surveillance System  
WCTS



Solar Surveillance & Lighting  
WCTS-LS

## Portable Lighting



Balloon Light Cart  
WLC600B/WI2000P



Balloon Light Tripod



Compact Light Tower  
WLTT-PD



Standard Light Tower  
WLT-PD



Solar Light Tower  
WLTS-PD



Solar Light Tower  
WLTS-MM-PD



Industry leadership is more than just selling the most equipment. It means serving the industry, exercising responsibility and setting an example of excellence in every aspect of business. At Wanco, we are committed to our role as the industry leader.

For more than 35 years, Wanco has been building best-in-class products that are easy to use. With unique features, superior functionality and outstanding versatility and dependability, Wanco products continue to deliver exceptional value for all our customers.

Архангельск (8182)63-90-72  
Астана (7172)727-132  
Астрахань (8512)99-46-04  
Барнаул (3852)73-04-60  
Белгород (4722)40-23-64  
Брянск (4832)59-03-52  
Владивосток (423)249-28-31  
Волгоград (844)278-03-48  
Вологда (8172)26-41-59  
Воронеж (473)204-51-73  
Екатеринбург (343)384-55-89  
Иваново (4932)77-34-06

Ижевск (3412)26-03-58  
Иркутск (395)279-98-46  
Казань (843)206-01-48  
Калининград (4012)72-03-81  
Калуга (4842)92-23-67  
Кемерово (3842)65-04-62  
Киров (8332)68-02-04  
Краснодар (861)203-40-90  
Красноярск (391)204-63-61  
Курск (4712)77-13-04  
Липецк (4742)52-20-81

Киргизия (996)312-96-26-47

Магнитогорск (3519)55-03-13  
Москва (495)268-04-70  
Мурманск (8152)59-64-93  
Набережные Челны (8552)20-53-41  
Нижний Новгород (831)429-08-12  
Новокузнецк (3843)20-46-81  
Новосибирск (383)227-86-73  
Омск (3812)21-46-40  
Орел (4862)44-53-42  
Оренбург (3532)37-68-04  
Пенза (8412)22-31-16

Россия (495)268-04-70

Пермь (342)205-81-47  
Ростов-на-Дону (863)308-18-15  
Рязань (4912)46-61-64  
Самара (846)206-03-16  
Санкт-Петербург (812)309-46-40  
Саратов (845)249-38-78  
Севастополь (8692)22-31-93  
Симферополь (3652)67-13-56  
Смоленск (4812)29-41-54  
Сочи (862)225-72-31  
Ставрополь (8652)20-65-13

Казахстан (772)734-952-31

Сургут (3462)77-98-35  
Тверь (4822)63-31-35  
Томск (3822)98-41-53  
Тула (4872)74-02-29  
Тюмень (3452)66-21-18  
Ульяновск (8422)24-23-59  
Уфа (347)229-48-12  
Хабаровск (4212)92-98-04  
Челябинск (351)202-03-61  
Череповец (8202)49-02-64  
Ярославль (4852)69-52-93

<http://wanco.nt-rt.ru> | [wca@nt-rt.ru](mailto:wca@nt-rt.ru)