

# Compact Light Towers

## LED/Metal Halide/LED Balloon



**Архангельск** (8182)63-90-72  
**Астана** (7172)727-132  
**Астрахань** (8512)99-46-04  
**Барнаул** (3852)73-04-60  
**Белгород** (4722)40-23-64  
**Брянск** (4832)59-03-52  
**Владивосток** (423)249-28-31  
**Волгоград** (844)278-03-48  
**Вологда** (8172)26-41-59  
**Воронеж** (473)204-51-73  
**Екатеринбург** (343)384-55-89  
**Иваново** (4932)77-34-06

**Ижевск** (3412)26-03-58  
**Иркутск** (395)279-98-46  
**Казань** (843)206-01-48  
**Калининград** (4012)72-03-81  
**Калуга** (4842)92-23-67  
**Кемерово** (3842)65-04-62  
**Киров** (8332)68-02-04  
**Краснодар** (861)203-40-90  
**Красноярск** (391)204-63-61  
**Курск** (4712)77-13-04  
**Липецк** (4742)52-20-81

**Киргизия** (996)312-96-47

**Магнитогорск** (3519)55-03-13  
**Москва** (495)268-04-70  
**Мурманск** (8152)59-64-93  
**Набережные Челны** (8552)20-53-41  
**Нижний Новгород** (831)429-08-12  
**Новокузнецк** (3843)20-46-81  
**Новосибирск** (383)227-86-73  
**Омск** (3812)21-46-40  
**Орел** (4862)44-53-42  
**Оренбург** (3532)37-68-04  
**Пенза** (8412)22-31-16

**Россия** (495)268-04-70

**Пермь** (342)205-81-47  
**Ростов-на-Дону** (863)308-18-15  
**Рязань** (4912)46-61-64  
**Самара** (846)206-03-16  
**Санкт-Петербург** (812)309-46-40  
**Саратов** (845)249-38-78  
**Севастополь** (8692)22-31-93  
**Симферополь** (3652)67-13-56  
**Смоленск** (4812)29-41-54  
**Сочи** (862)225-72-31  
**Ставрополь** (8652)20-65-13

**Казахстан** (772)734-952-31

**Сургут** (3462)77-98-35  
**Тверь** (4822)63-31-35  
**Томск** (3822)98-41-53  
**Тула** (4872)74-02-29  
**Тюмень** (3452)66-21-18  
**Ульяновск** (8422)24-23-59  
**Уфа** (347)229-48-12  
**Хабаровск** (4212)92-98-04  
**Челябинск** (351)202-03-61  
**Череповец** (8202)49-02-64  
**Ярославль** (4852)69-52-93

<http://wanco.nt-rt.ru> | [wca@nt-rt.ru](mailto:wca@nt-rt.ru)

# The ingenious compact light tower our customers asked for

- Up to 18 units on a single truck
- Aim lights from the ground
- Heavy gauge all-steel body
- Tallest of all compact light towers
- Largest fuel tank and longest run time in its class

Wanco Compact Light Towers are all about size and efficiency. They save you money right from the start by fitting more units on a truck, then save you even more with features that include an extra-large fuel tank and lights you can adjust without a step.

When you order a fleet of new Wanco Compact Light Towers—up to 18 units—it fits on a single 53-foot truck, giving you more units for the same shipping cost. A small footprint and fold-up tow bar make this light tower extremely compact for storage as well, so it takes up less space both on the job-site and in your yard.

Its small size doesn't sacrifice performance, though. When paired with the largest fuel tank in its class, its robust industrial-grade power plant provides the longest run time of any compact light tower available—about 240 hours before refueling.

Wanco Compact Light Towers are equipped with state-of-the-art technology to achieve superior illumination whether you choose LED or metal halide lights. Our LEDs are the most powerful you'll find on any LED light tower in any class, and our HIDs use a highly reflective fixture design that puts maximum light on the job for longer, increasing productivity and safety, saving you time and money. Balloon lights are also available.

Efficiency and safety continue with durable components that will last, and thoughtful design features that may surprise you. Rental houses will love the industrial-grade leveling jacks and the only all-steel cabinet available in a compact model. Users can aim the lights while standing on the ground, before raising the tower—no ladder needed, no need to climb on the trailer—and the always vertical tower is easy to raise and lower with a dual-handle manual winch or a power winch.

Compact and efficient, cost-effective to own and operate, the unique Wanco Compact Light Tower is impressively unlike any other.



## Brief specifications

### Physical

Deployed footprint	129 × 111 in (327 × 281cm), L × W	
Operating height	Max. 24½ ft (7.5m)	
	Min. 7¾ ft (2.4m)	
Travel height	93 in (237cm)	
Weight	Operating	Approx. 1965 lb (891kg)
	Shipping	Approx. 1580 lb (717kg)
Tongue weight	Dry	80 lb (36kg)

### Lights

	480-watt LEDs	350-watt LEDs	Metal halides
Lamps*	Four 480W fixtures	Four 350W fixtures	Four 1000W lamps
Luminosity**	57,800 lm per fixture	49,000 lm per fixture	110,000 lm per lamp
	231,200 lm total	196,000 lm total	440,000 lm total

### Power system

Engine type	Tier 4 Final diesel, 3-cylinder, 4-cycle	
Engine speed*	1800 rpm @ 60 Hz or 1500 rpm @ 50 Hz	
Generator type	Brushless, class H	
Sound level	68 dB @ 23 ft (7m) at max. load	
Battery	Maintenance-free AGM, 12 Vdc, 550 CCA	

	Kubota® D1005	Mitsubishi® L3E
Maximum power output*	13.1 hp (9.8 kW)	12.2 hp (9.1 kW)
Displacement*	61.08 in³ (1001cm³)	58.09 in³ (952cm³)
Fuel tank capacity	60 gal (227L)	60 gal (227L)

	480-watt LEDs	350-watt LEDs	Metal halides
Fuel consumption*	0.31 gal/hr (1.17L/h)	0.25 gal/hr (0.096L/h)	0.49 gal/hr (1.86L/h)
Runtime before refueling*	Approx. 190 hrs	Approx. 240 hrs	Approx. 120 hrs

### Output power

Output*	6 kW or 8 kW
Voltage*	120 Vac or 240 Vac
Amperage	50 A @ 120V, 25 A @ 240V
Frequency*	60 Hz or 50 Hz
Voltage regulation	±6%, no load to full load

\*Depending on model    \*\*Continuous intensity for LEDs, initial intensity for metal halides

# Laydown Light Towers

## LED/Metal Halide/LED Balloon



# Robust and reliable with unique features for enhanced performance

- High-output light fixtures
- Telescoping tower rotates nearly 360 degrees
- Multiple low-speed engine options
- Heavy gauge all-steel body
- Unobstructed engine accessibility



Not just another light tower, Wanco Laydown Light Towers use state-of-the-art technology for superior illumination, shining a uniform light pattern across the entire job site and exceeding government regulations for worksite illumination.

For fast job-site setup and less downtime, each light fixture can be aimed independently without the use of tools—and the fixtures stay in place once positioned. Choose either LED or metal halide lights when specifying your light tower. Wanco’s proprietary LED fixtures are the brightest available on any portable light tower, and Wanco’s metal halide fixtures feature high-intensity parabolic reflectors that increase illumination. Balloon lights are also available.

The telescoping tower stows securely in a travel cradle when it is horizontal, then extends vertically to 30 feet when deployed. While upright, the tower rotates nearly 360 degrees and the lights operate at any height, eliminating the need to move the trailer frequently. Two winches raise and extend the tower easily. Manual winches are standard and power winches are optional.

A choice of industrial diesel engines and four-pole generators ensure reliable performance. The high-efficiency engine and 30-gallon fuel tank provide extended run times between refuelings—up to 120 hours with Wanco’s exclusive LED light fixtures. Performance enhancing options include an automated dusk-to-dawn start/stop system and cold-weather start package.

For system maintenance, Wanco’s exclusive hinged top panel provides unimpeded access to the engine, generator and electrical components. The equipment bay is a rugged all-steel cabinet with gull-wing doors that can be locked closed to protect against unauthorized access.

Wanco Laydown Light Towers boast trouble-free performance and exceptional longevity—hallmarks of the Wanco brand.

## Brief specifications

### Physical

Deployed footprint	127 × 112 in. (321 × 285 cm), L × W	
Operating height	Max. 30 ft (9.14m)	
	Min. 12½ ft (3.81m)	
Travel height	66 in (168cm)	
Weight	Operating	Approx. 1800 lb (815kg)
	Shipping	Approx. 1550 lb (703kg)

### Lights

	480-watt LEDs	350-watt LEDs	Metal halides
Lamps*	Four 480W fixtures	Four 350W fixtures	Four 1000W lamps
Luminosity**	57,800 lm per fixture 231,200 lm total	49,000 lm per fixture 196,000 lm total	110,000 lm per lamp 440,000 lm total

### Power system

Engine type	Tier 4 Final diesel, 3-cylinder, 4-cycle	
Engine speed*	1800 rpm @ 60 Hz or 1500 rpm @ 50 Hz	
Generator type	Brushless, class H	
Sound level	71 dB @ 23 ft (7m) at max. load	
Battery	12 Vdc, 550 CCA	

	Kubota® D1005	Mitsubishi® L3E	Kohler® KD1003
Maximum power output*	13.1 hp (9.8 kW)	15.4 hp (11.5 kW)	23.7 hp (17.7 kW)
Displacement*	61.08 in³ (1001cm³)	68.53 in³ (1123cm³)	62.7 in³ (1028cm³)
Fuel tank capacity	30 gal (114L)	30 gal (114L)	30 gal (114L)
	480-watt LEDs	350-watt LEDs	Metal halides
Fuel consumption*	0.31 gal/hr (1.17L/h)	0.25 gal/hr (0.096L/h)	0.49 gal/hr (1.86L/h)
Runtime before refueling*	Approx. 97 hrs	Approx. 120 hrs	Approx. 62 hrs

### Output power

Output*	6 kW or 8 kW
Voltage*	120 Vac or 240 Vac
Amperage	50 A @ 120V, 25 A @ 240V
Frequency*	60 Hz or 50 Hz
Voltage regulation	±6%, no load to full load

\*Depending on model    \*\*Continuous intensity for LEDs, initial intensity for metal halides



# Vertical-Mast Light Towers

## LED/Metal Halide/LED Balloon



# Quick deployment with a vertical mast and single winch

- Telescoping vertical tower deploys with a single winch
- High-output LED or metal halide lights
- Multiple low-speed engine options
- Heavy gauge all-steel body
- Power winch and hydraulic lift are available

Wanco Vertical-Mast Light Towers deploy quickly with a single winch or hydraulic lift to raise the 30-foot mast. The mast remains vertical for transport and storage, saving space and allowing more units to fit on a truck.

For fast job-site setup and less downtime, each light fixture can be aimed independently without the use of tools—and the lights stay in place once positioned. Choose either LED or metal halide lights when specifying your light tower. Balloon lights are also available. Wanco’s proprietary LED fixtures are the brightest available on a portable light tower. Wanco’s metal halide fixtures feature high-intensity parabolic reflectors that increase illumination.

The telescoping tower rotates nearly 360 degrees while fully extended or lowered, and the lights operate at any height, eliminating the need to move the trailer frequently. Only a single winch is needed for lifting the vertical tower. The standard winch has two handles for increased speed and ease of use. An optional hydraulic lift raises the tower faster and without effort, and an electrically operated power-winch is also available. Wanco’s unique dual-pulley system lifts each tower section from below, balancing the load and improving durability. For job site safety, two outriggers add stability when the tower is extended.

A choice of industrial diesel engines and four-pole generators ensure reliable performance. The high-efficiency engine and 30-gallon fuel tank provide extended run times between refuelings—up to 120 hours with Wanco’s exclusive LED light fixtures. Performance enhancing options include an automated dusk-to-dawn start/stop system and a cold-weather start package.



## Brief specifications

### Physical

Deployed footprint	130 × 112 in. (330 × 285cm), L × W	
Operating height	Max. 30 ft (9.14m)	
	Min. 9 ft (2.77m)	
Travel height	109 in (276cm)	
Weight	Operating	Approx. 1990 lb (903kg)
	Shipping	Approx. 1740 lb (780kg)

### Lights

	480-watt LEDs	350-watt LEDs	Metal halides
Lamps*	Four 480W fixtures	Four 350W fixtures	Four 1000W lamps
Luminosity**	57,800 lm per fixture 231,200 lm total	49,000 lm per fixture 196,000 lm total	110,000 lm per lamp 440,000 lm total

### Power system

Engine type	Tier 4 Final diesel, 3-cylinder, 4-cycle
Engine speed*	1800 rpm @ 60 Hz or 1500 rpm @ 50 Hz
Generator type	Brushless, class H
Sound level	71 dB @ 23 ft (7m) at max. load
Battery	12 Vdc, 550 CCA

	Kubota® D1005	Mitsubishi® L3E	Kohler® KD1003
Maximum power output*	13.1 hp (9.8 kW)	12.2 hp (9.1 kW)	12.4 hp (9.1 kW)
Displacement*	61.08 in³ (1001cm³)	58.09 in³ (952cm³)	62.7 in³ (1028cm³)
Fuel tank capacity	30 gal (114L)	30 gal (114L)	30 gal (114L)

	480-watt LEDs	350-watt LEDs	Metal halides
Fuel consumption*	0.31 gal/hr (1.17L/h)	0.25 gal/hr (0.096L/h)	0.49 gal/hr (1.86L/h)
Runtime before refueling*	Approx. 97 hrs	Approx. 120 hrs	Approx. 62 hrs

### Output power

Output*	6 kW or 8 kW
Voltage*	120 Vac or 240 Vac
Amperage	50 A @ 120V, 25 A @ 240V
Frequency*	60 Hz or 50 Hz
Voltage regulation	±6%, no load to full load

\*Depending on model    \*\*Continuous intensity for LEDs, initial intensity for metal halides



# Wanco® Long-Run™ Diesel Light Towers





- Brighter than a metal halide light tower
- Less than a third of the operating cost
- 225 hours on a single tank of fuel
- Quiet operation — softer than a phone's dial tone
- "Instant on" and full brightness right away



## This is the light tower you always wanted

The concept behind Wanco's new light tower was simple:

Make it brighter. Use less fuel. Save big!

Wanco® Long-Run™ Light Towers are brighter than a typical metal halide light tower, but they use far less power. Add a large fuel tank and an engine that is sized for the load, and you get extremely long run times with far fewer refuellings.

You can see the savings add up. Contact your Wanco representative to see how much.





# Superb functionality, unique features, versatility and dependability

## LED lights

LED technology effectively replaces outdated HID flood lights. By design, LEDs have a more controlled, highly directional light distribution, focusing light rather than sending it in all directions. The result is more efficient use of light energy and much lower power consumption. Wanco Long-Run Light Towers optimize the benefits of LED technology for brilliant illumination and extraordinary fuel savings.

## Tower

The telescoping tower assembly is compact when stored, yet rises to 30 feet when deployed. Two winches raise and extend the mast easily. Power- and hand-operated winches are available. In the upright position, the light tower mast rotates 360 degrees, and each light can be aimed individually. The lights can operate at any height.

## Power system

The power system features a rugged Tier 4 diesel engine and high-quality two-pole generator. An extra-large fuel tank provides extended run times of up to 225 hours between refuellings. An electric fuel gauge provides an instant read of fuel level, and is lighted for easy viewing at night.

## Eco-friendly

Exceptional power efficiency and fuel savings create a smaller carbon footprint than other light towers. Low fuel consumption not only lengthens run times, it greatly reduces refueling and maintenance costs. Additionally, built-in fluid containment protects against ground contamination from leaks, spills and drips.

## Serviceability

Wanco created a unique innovation that greatly improves serviceability. For complete access to the engine, generator and electrical components, Long-Run Light Towers feature a hinged top panel that rises with the mast when maintenance is required. No other light tower makes engine access this easy. Gull-wing side doors may be opened while the maintenance panel is raised, further enhancing access.

## Adaptability

Wanco Long-Run Light Towers can be enhanced for specific applications with a wide selection of options: a flashing beacon indicates low fuel and activation of the fluid containment system; an electric fan with sensor-controlled operation keeps the engine running in extreme temperatures; automatic engine controls provide autonomous operation for remote locations; and many more options are available to suit your application.

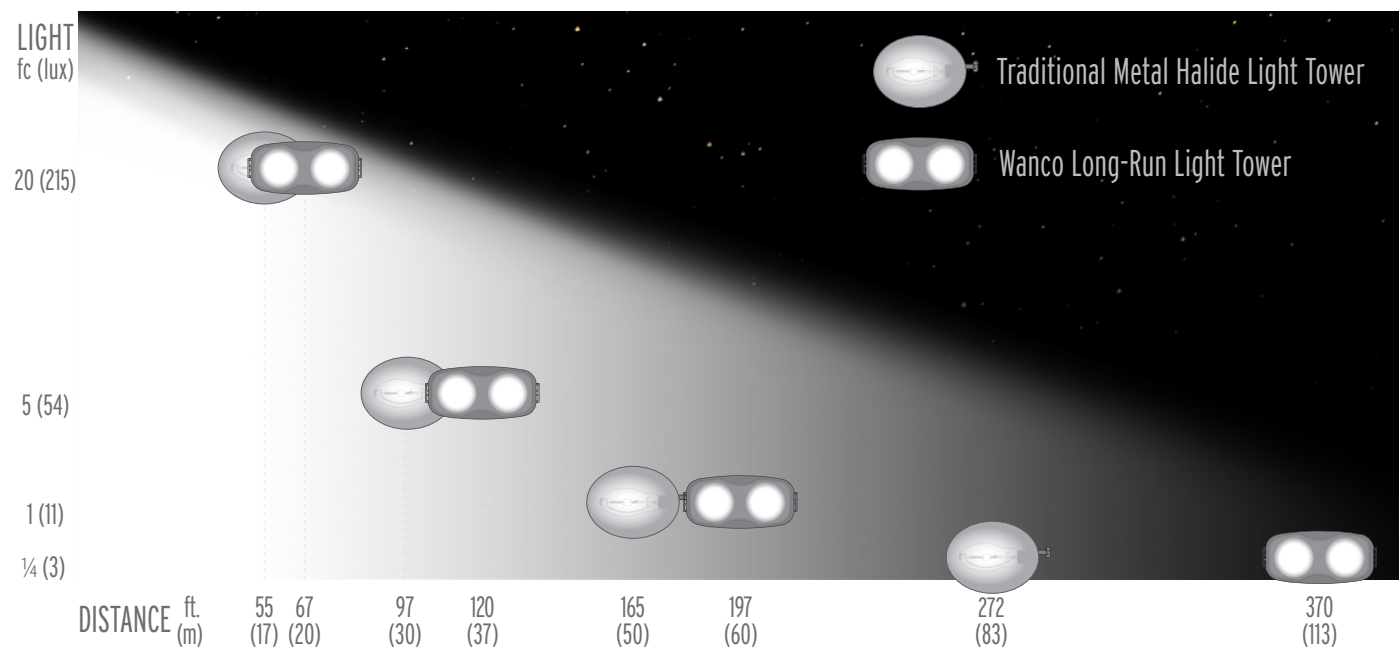


Travel position

# High-efficiency LED lights are brighter and last longer

- Four lights provide about 200,000 lumens, brighter than a metal halide light tower
- 6500K color temperature emulates daylight, provides more realistic (less artificial-looking) illumination and is easier on the eyes
- Instant-on and immediate full intensity, no warm-up or cool-down, never any waiting
- 50,000-hour LED lifespan reduces maintenance, never replace a light bulb
- Industrial-grade fixtures are heavy-duty, rugged and extremely durable

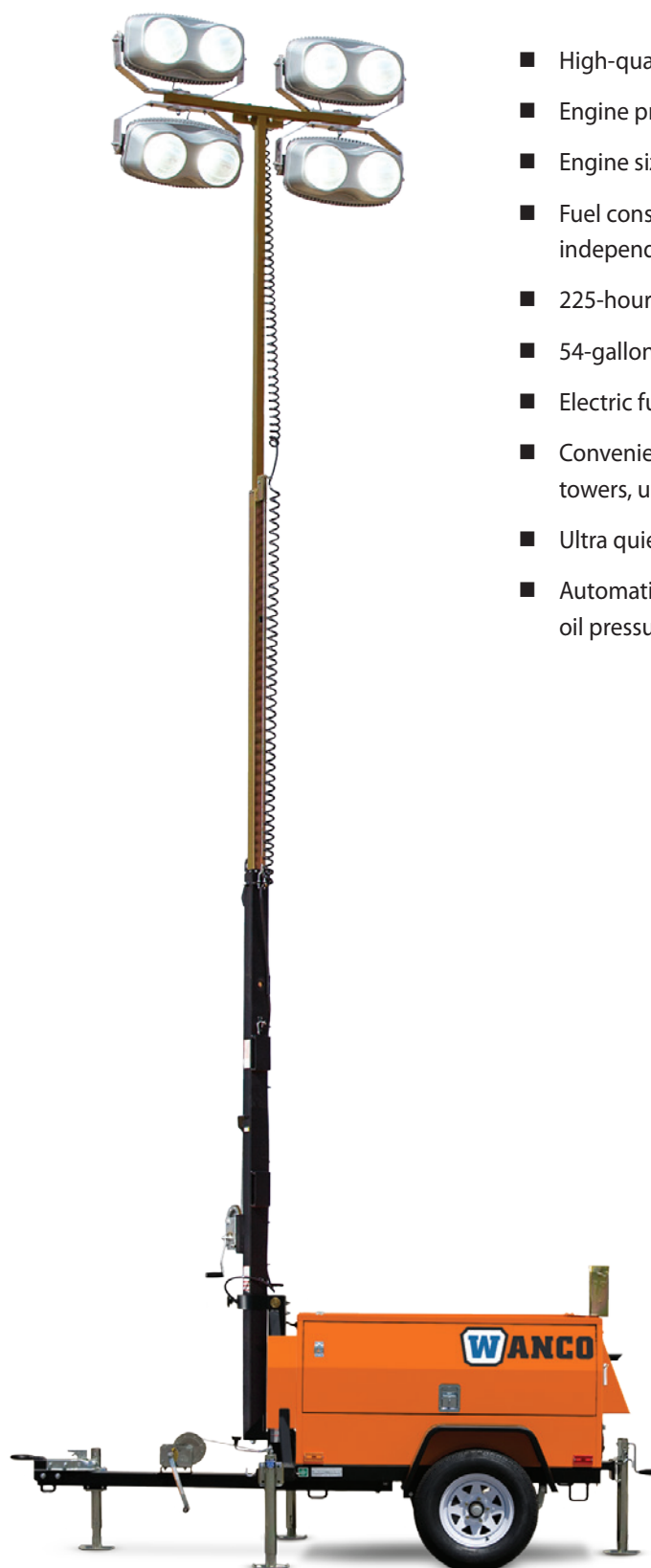
## How bright is your light tower?



## How long will your lights last?



# The Long-Run power system is truly revolutionary



- High-quality Perkins® industrial diesel engine, 3-cylinder, water-cooled
- Engine properly sized for smaller-wattage load of high-efficiency LED lights
- Engine size prevents wet stacking, ensuring higher efficiency and no waste
- Fuel consumption measured at just 0.24 gallons (0.9 liters) per hour based on independent testing (other light towers use about a half gallon or more)
- 225-hour run time before refueling
- 54-gallon (204-liter) steel fuel tank has extra-large filler neck
- Electric fuel gauge includes a light for nighttime viewing
- Convenience outlet provides more power output than conventional light towers, up to 2400 watts
- Ultra quiet — just 58 dBA at 30 feet, 68 dBA at 18 inches
- Automatic engine-shutdown system protects engine from damage due to low oil pressure and high coolant temperature



Control panel

# Loaded with unique features for outstanding performance

## Standard features

- Control panel includes elapsed hour meter and circuit breakers for lights and main power
- Convenience outlet for auxiliary equipment has a dedicated circuit breaker
- Fully enclosed equipment bay protects controls, engine and other components from the elements and unauthorized access
- Integral spill containment holds 110% of engine fluids, is eco-friendly and eliminates the need for a “duck pond”
- Compact design is easily maneuverable during transport and takes up less space when stored
- Fixture-stabilizing transport straps provide built-in protection for lights
- Torsion axle for smoother ride, reduces stresses on light tower components
- Hinged maintenance panel provides unimpeded access to engine, generator and electrical components



Engine access with maintenance panel raised

## Options

- Warning beacon flashes when fuel is low and when a fluid containment alarm is triggered
- Dual electric winches make deployment even easier
- Auto-start/stop system turns the light tower on at dusk and off at dawn (see below)
- Cold-weather start package includes oil pan and block heater, as well as a built-in GFI junction box
- Sound attenuation reduces ambient noise level
- Emergency shutdown options include manual E-stop button and automatic air-shutoff valve
- Oversized forklift channels installed under frame, all-welded construction
- Off-road trailer package features a wide-stance torsion axle and 15-inch tires to improve mobility on rough terrain



Optional auto-start/stop control panel

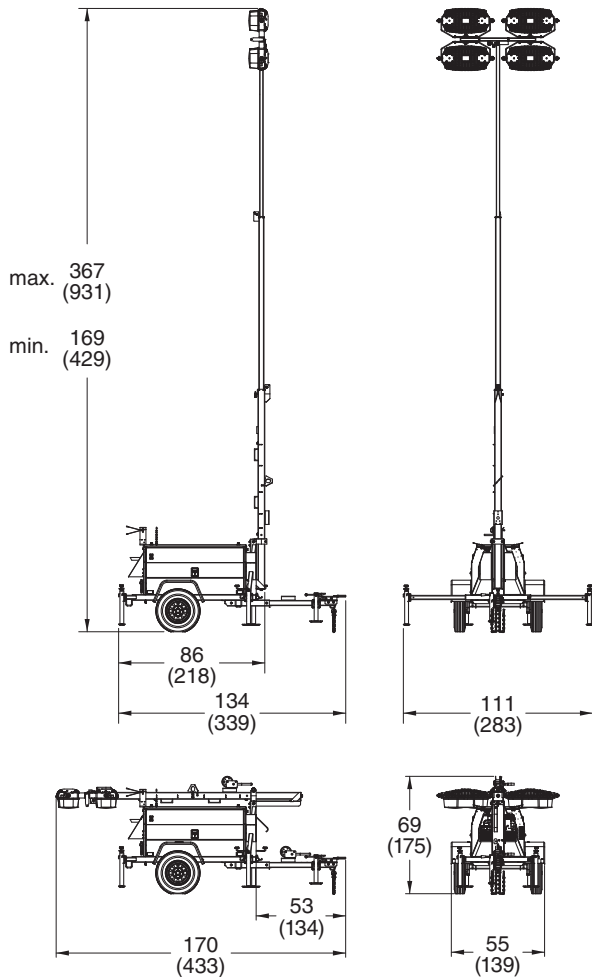
The optional auto-start/stop system uses a photocell sensor to detect daylight and automatically starts and stops the engine. The controller monitors the system, including fuel level and engine run time, and displays information on a large backlit LED screen. The auto-start/stop system saves a tremendous number of man-hours and fuel by operating the light tower without intervention.



# Specifications

## Physical

Dimensions in *inches*  
(*cm*)



Operating weight	2165 lbs. (982kg)
Shipping weight	1780 lbs. (807kg)
Tires	ST175/80D13
Tow hitch	Combo-type for 2-inch ball and 3-inch pintle hook

## Lights

Lamps	Four LED fixtures
Wattage	400 watts per fixture
Luminosity	50,000 lumens per fixture 200,000 lumens total

## Output power

Generator type	Brushless
Generator insulation	H
Output	4.0 kW
Voltage	120 / 240 Vac
Amperage	16 A @ 240 Vac
Frequency	60 Hz or 50 Hz, depending on model
Voltage regulation	< 6%, no load to full load

## Power system

Engine type	Tier 4 diesel, 3-cylinder, 4-cycle
Battery	12 Vdc, 390 CCA
Maximum power output	8.8 hp (6.56 kW)
Displacement	46.4 cu. in. (760cm <sup>3</sup> or 761ml)
Sound level at maximum load	58 dB at 30 feet (9.1m)
Fuel tank capacity	54 gal. (204L)
Fuel consumption	0.24 gal./hr. (0.91L/h)
Runtime before refueling	225 hrs.

## Functional

Steel enclosure protects components from the elements. Enclosure is powder-coated, lockable, and weather-resistant.

Two telescoping outriggers and five leveling jacks provide stability.

Control panel features 120-volt GFCI receptacle for powering external equipment, and circuit breakers for on/off functionality and protection.

Diesel engine includes electric fuel pump for a steady supply of fuel, and glow-plug preheat system for increased service life and improved cold-weather starting.

Optional photocell-triggered auto-start/stop system automatically starts engine at dusk and stops engine at dawn.

Automatic engine-shutdown system protects engine from damage due to low oil pressure and high coolant temperature.

Two gull-wing doors with latches and locking handles provide access to controls, fuel tank, engine and electronics.

For maintenance, hinged top panel provides unimpeded access to engine, generator and electrical components.

Snow hoods protect air vents against moisture and debris infiltration.

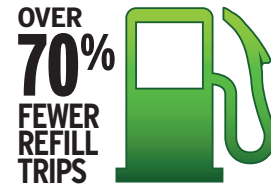
Integrated fluid containment pan prevents ground contamination if leaks and spills occur.

# Save thousands per year



## 12-month fuel cost\*

Genie® Terex™ RL™ 4	\$6,930
Magnum™ MLT3060	\$6,514
Wacker Neuson® LTN 6L	\$6,237
Wanco® WLTC	\$6,098
Wanco® Long-Run™	\$3,326



## Run time per tank of fuel\*\*



Genie Terex RL 4	60 hours
Magnum MLT3060	64 hours
Wanco WLTC	68 hours
Wacker Neuson LTN 6L	72 hours
Wanco Long-Run	225 hours†

## Calculate your savings

Use our online calculator to see how much you will save with a Long-Run Light Tower compared with your light tower. Contact your Wanco representative for a detailed analysis.



*Totals calculated using manufacturer specifications. \*Based on average diesel fuel cost of \$3.85 per gallon (typical, per AAA & US EIA) and average runtime of 12 hours per day, 25 days per month. \*\*Actual run times will be shorter because engine loads result in fuel consumption that is greater than specifications indicate. †Actual value based on independent testing.*

*Due to Wanco's commitment to continuous improvement of our products, all information is subject to change without notice. Wanco and the Wanco logo are registered trademarks and Long-Run is a trademark of Wanco Inc. All other trademarks are property of their respective owners. Patents pending.*

# 12kW Diesel Light Tower

## LED Lights/Vertical Tower/Generator



# Industrial-grade generator does double duty as a powerful LED light tower

- 25-foot vertical light tower
- 12kW industrial generator
- 196,000 lumens with 350W LED fixtures
- Perkins® Tier 4 final diesel engine
- Connections for auxiliary fuel tank

The Wanco® 12kW Light Tower is based on our most compact Mobile Generator. Designed for versatility and ease of use, the generator provides plenty of power while doubling as a full featured high-intensity LED light tower.

## Light Tower

The telescoping vertical tower rises to just under 25 feet (7.5 meters) when deployed. A single winch extends the tower. The tower rotates 358 degrees even when deployed, and the lights can be aimed individually without tools. The lights operate at any height.

Wanco's industrial-grade light fixtures provide nearly 200,000 lumens and are extremely durable. Our 350-watt LED fixtures are standard, while our 480-watt LED fixtures are an even brighter option. LEDs have a 50,000-hour lifespan that equates to over 10 years of use, significantly reducing the need for maintenance.

## Generator

The 12kW power system features a rugged Perkins® Tier 4 final diesel engine and an oversized Mecc Alte alternator with PMG for superior starting capacity.

The system includes a Deep Sea 6000-series digital controller with a sophisticated level of features and functions. The user-friendly controller displays warning, shutdown and engine status on a heated and backlit display. An emergency-stop button is located on the exterior of the generator enclosure.

Industrial-grade construction ensures durability, longevity and reliable operation. A double-wall steel fuel tank is integrated with the trailer and includes connections for attaching an auxiliary tank.

## Environmental

Exceptional power efficiency and fuel savings create a smaller carbon footprint when compared with other light towers. Low fuel consumption also lengthens run times, greatly reducing refueling and maintenance costs.

Integral sound attenuation provides superior noise reduction — just 59 dBA at 23 feet (7 meters). Built-in fluid containment protects against ground contamination from leaks, spills and drips.



## Brief specifications

### Lights

Light fixtures	Four LED fixtures
Power draw	350 W per fixture 1400 W total
Luminosity	49,000 lm per fixture 196,000 lm total

### Power system

Engine	Perkins 403F-15G 4-cycle, indirect injection diesel
Standby rating	11.9 kW
Output voltages	120/240
Fuel capacity	58.2 gal (220 L)
Run time, continuous	
lights only	135 hrs
generator only	@ 25% load 112 hrs @ 50% load 84 hrs @ 100% load 56 hrs
Sound level	59 dBA @ 23 ft (7 m)

### Options

- Electric winch for raising and lowering light tower
- Auto-start/stop system turns lights on at dusk and off at dawn
- Cold-soak prevention system ensures operation in cold temperatures



# 20kW Diesel Light Tower

## LED Lights/Vertical Tower/Generator



# More surplus power than any other 20kW light tower, plus single- and three-phase output

- 200,000 lumens with LED fixtures
- Telescoping vertical tower
- True 25kVA/20kW industrial generator
- Switchable 3-phase/1-phase power
- Connections for auxiliary fuel tank



The Wanco® 20kW Light Tower is based on our line of Mobile Generators. This is by far the most powerful light tower on the market today, with more surplus power than any other brand. This industrial light tower lights up your work site and has plenty of power left over for all your field office needs.

## Light Tower

The telescoping vertical tower rises to nearly 30 feet when deployed. A single electric winch extends the tower. The tower rotates 358 degrees even when deployed, and the lights can be aimed individually without tools. The lights operate at any height.

Wanco's industrial-grade light fixtures provide 200,000 lumens and are extremely durable. LEDs have a 50,000-hour lifespan that equates to over 10 years of use, significantly reducing the need for maintenance and lowering overall cost of ownership.

## Generator

A true 20 kilowatts, the power system features a rugged Perkins® diesel engine and an oversized Mecc Alte alternator with PMG for superior starting capacity.

The system includes a Deep Sea 7000-series digital controller with a sophisticated level of features and functions. The user-friendly controller displays warning, shutdown and engine status on a heated and backlit display. An emergency-stop button is located on the exterior of the generator enclosure.

Industrial-grade construction ensures durability, longevity and reliable operation. A double-wall steel fuel tank is integrated with the trailer and includes connections for attaching an auxiliary tank.

## Environmental

Exceptional power efficiency and fuel savings create a smaller carbon footprint when compared with other light towers. Low fuel consumption also lengthens run times, greatly reducing refueling and maintenance costs.

Integral sound attenuation provides superior noise reduction — just 59 dBA at 23 feet (7 meters). Built-in fluid containment protects against ground contamination from leaks, spills and drips.

## Brief specifications

### Lights

Light fixtures	Four LED fixtures
Power draw	400 W per fixture 1600 W total
Luminosity	50,000 lm per fixture 200,000 lm total

### Power system

Engine	Perkins 404D-22G 4-cycle, indirect injection diesel
Standby rating	27 kVA/20 kW
Output voltages	120/240 120/208 277/480
Fuel capacity	60.7 gal (230 L)
Run time, continuous	@ 25% load 101.2 hrs @ 50% load 60.7 hrs @ 100% load 38.0 hrs
Sound level	59 dBA @ 23 ft (7 m)

### Options

- Electric winch for raising and lowering light tower
- Auto-start/stop system turns lights on at dusk and off at dawn
- Cold-soak prevention system ensures operation in cold temperatures



# Mine-Spec Light Towers

## LED/Metal Halide



# Developed by the mining industry for the mining industry

- Most powerful LEDs of any light tower
- Unique mast design for increased safety
- Large usable internal storage space
- DSE automatic dusk-to-dawn controller
- Polar cold-start system prevents cold-soaking

Wanco Mine-Spec Light Towers are designed specifically for the harsh environmental conditions and rigorous operating demands of the mining industry—which also makes them perfect for oil and gas field applications.

These light towers are built tough for dependable operation and long lifespan. Their heavy-duty construction includes a fully welded structural steel frame, all-steel enclosure and industrial-grade power plant for continuous peak performance.

Ideal for use in environmentally sensitive areas, integrated fluid containment protects against leaks and spills, eliminating costly cleanup expenses and regulatory fines. Superior fuel efficiency, low fuel consumption and extended service intervals all serve to reduce the light tower's carbon footprint and operating costs.

Safety features include an emergency-stop button, battery disconnect switch, exhaust shield, muffler wrap and fan and belt guards. An externally-mounted fire extinguisher bracket is standard. Wanco's unique dual-pulley system lifts each tower section from below, balancing the load and improving safety. Four stabilizer jacks and two outriggers provide stability.

Conveniences include a Deep Sea Electronics auto-start/stop control system, external convenience outlets with watertight covers, wheel chocks and ample tool and equipment storage inside the wide-body enclosure. The equipment cabinet can be locked against unauthorized access. A flashing beacon warns of low fuel level or active fluid containment.

Choose either LED or metal halide lights when specifying your light tower. Wanco's proprietary LED fixtures are the brightest available on any portable light tower, with long life and instant-on functionality among their top features. Wanco's metal halide fixtures feature high-intensity parabolic reflectors that increase illumination.



## Brief specifications

### Physical

Deployed footprint	135 × 133 in. (344 × 337cm), L × W
Operating height	Max. 30 ft (9.14m) Min. 8.75 ft (2.67m)
Travel height	105 in (267cm)
Weight	Operating    Approx. 2525 lb (1145kg) Shipping    Approx. 2150 lb (975kg)

### Lights

	480-watt LEDs	350-watt LEDs	Metal halides
Lamps*	Four 480W fixtures	Four 350W fixtures	Four 1000W lamps
Luminosity**	57,800 lm per fixture 231,200 lm total	49,000 lm per fixture 196,000 lm total	110,000 lm per lamp 440,000 lm total

### Power system

Engine type	Tier 4 Final diesel, 3-cylinder, 4-cycle
Engine speed*	1800 rpm @ 60 Hz or 1500 rpm @ 50 Hz
Generator type	Brushless, class H
Sound level	71 dB @ 23 ft (7m) at max. load
Battery	12Vdc, 550 CCA

	Kubota® D1005	Mitsubishi® L3E	Kohler® KD1003
Maximum power output*	13.1 hp (9.8 kW)	12.2 hp (9.1 kW)	12.4 hp (9.1 kW)
Displacement*	61.08 in³ (1001cm³)	58.09 in³ (952cm³)	62.7 in³ (1028cm³)
Fuel tank capacity	50 gal (204L)	50 gal (204L)	50 gal (204L)
Fuel consumption*	0.31 gal/hr (1.17L/h)	0.25 gal/hr (0.096L/h)	0.49 gal/hr (1.86L/h)
Runtime before refueling*	Approx. 161 hrs	Approx. 200 hrs	Approx. 102 hrs

### Output power

Output*	6 kW or 8 kW
Voltage*	120 Vac or 240 Vac
Amperage	50 A @ 120V, 25 A @ 240V
Frequency*	60 Hz or 50 Hz
Voltage regulation	±6%, no load to full load

\*Depending on model    \*\*Continuous intensity for LEDs, initial intensity for metal halides



# Internal Storage Light Towers

## LED/Metal Halide/LED Balloon



# Wide-body canopy provides storage for lights or equipment

- Quick-disconnect wiring
- Choose LED, metal halide or balloon lights
- Telescoping tower rotates nearly 360 degrees
- Vertical or laydown tower
- Internal storage with lockable doors

Wanco Internal Storage Light Towers feature the same excellent quality and functionality as our standard diesel light towers, and they have a wide-body equipment bay for storing the lights or other equipment.

For fast job-site setup and less downtime, each light fixture can be aimed independently without the use of tools—and the fixtures stay in place once positioned. Choose LED, metal halide or balloon lights when specifying your light tower. All lights feature quick-disconnect wiring connections.

You can select our laydown-style tower for its low towing and storage height, or our vertical tower for ease of deployment with a single winch or an optional hydraulic lift. Both types of towers feature a telescoping design, 30-foot height and nearly 360-degree rotation even when fully raised. The lights operate at any height.

A choice of industrial diesel engines and four-pole generators ensures reliable performance. Output power and convenience outlets are included for running auxiliary equipment. The high-efficiency engine and 30-gallon fuel tank provide extended run times between refuelings—up to 120 hours with Wanco’s exclusive LED light fixtures. Performance enhancing options include a dusk-to-dawn auto-start/stop system and a cold-weather start package.

The equipment bay is a rugged all-steel cabinet with two gull-wing doors that can be locked closed to protect against unauthorized access. The cabinet includes fixed mounting for the light fixtures, or it can be used for storing equipment.

Wanco Internal Storage Light Towers boast trouble-free operation and exceptional longevity—hallmarks of the Wanco brand.



## Brief specifications

### Physical

Deployed footprint	127 × 133 in. (321 × 337cm), L × W	
Operating height	Max. 30 ft (9.14m)	
	Min. 12½ ft (3.81m)	
Travel height*	Laydown tower	66 in (168cm)
	Vertical tower	109 in (276cm)
Weight	Operating	Approx. 1930 lb (875kg)
	Shipping	Approx. 1680 lb (762kg)

### Lights

	480-watt LEDs	350-watt LEDs	Metal halides
Lamps*	Four 480 W fixtures	Four 350 W fixtures	Four 1000 W lamps
Luminosity**	57,800 lm per fixture 231,200 lm total	49,000 lm per fixture 196,000 lm total	110,000 lm per lamp 440,000 lm total

### Power system

Engine type	Tier 4 Final diesel, 3-cylinder, 4-cycle	
Engine speed*	1800 rpm @ 60 Hz or 1500 rpm @ 50 Hz	
Generator type	Brushless, class H	
Sound level	71 dB @ 23 ft (7m) at max. load	
Battery	12 Vdc, 550 CCA	

	Kubota® D1005	Mitsubishi® L3E	Kohler® KD1003
Maximum power output*	13.1 hp (9.8 kW)	15.4 hp (11.5 kW)	23.7 hp (17.7 kW)
Displacement*	61.08 in³ (1001cm³)	68.53 in³ (1123cm³)	62.7 in³ (1028cm³)
Fuel tank capacity	30 gal (114L)	30 gal (114L)	30 gal (114L)
	480-watt LEDs	350-watt LEDs	Metal halides
Fuel consumption*	0.31 gal/hr (1.17L/h)	0.25 gal/hr (0.096L/h)	0.49 gal/hr (1.86L/h)
Runtime before refueling*	Approx. 97 hrs	Approx. 120 hrs	Approx. 62 hrs

### Output power

Output*	6 kW or 8 kW
Voltage*	120 Vac or 240 Vac
Amperage	50 A @ 120 V, 25 A @ 240 V
Frequency*	60 Hz or 50 Hz
Voltage regulation	±6%, no load to full load

\*Depending on model    \*\*Continuous intensity for LEDs, initial intensity for metal halides

# Solar Light Towers

## Portable and Silent LED Lighting





# Small Solar Light Tower

- Four LED lights on 20-foot tower
- Compact trailer
- Automatic and manual operating modes
- Battery powered and solar charged
- Maintenance-free AGM batteries

Wanco's Small Solar Light Tower is perfect for lighting areas up to 7,200 square feet. Common applications include utility site and road repairs, security checkpoints and gated entrances, flagger stations and personal work areas. Solar light towers operate silently, which means they can be used in residential areas without disturbing the public.

This light tower features four high-efficiency LED light fixtures on a 20-foot telescoping tower. The tower rotates nearly 360 degrees without lowering the lights, which operate at any height. The lights can be individually aimed without the use of tools, and they stay where you point them. The tower remains vertical at all times, and the trailer's low center of gravity keeps the tower stable.

Batteries provide power and an automated solar-based charging system keeps the batteries charged. Functions include manual control and a choice of automatic modes that include dusk-to-dawn operation. Autonomous operation is possible during summer.

## Brief specifications

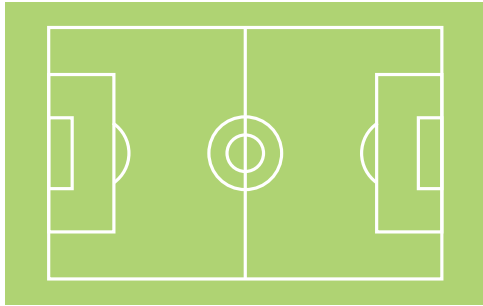
Lights	Four adjustable light fixtures
Luminosity	8700 lumens per fixture 34,800 total lumens
Coverage area	7200 sq. ft.
Power draw	60 watts per light fixture
Light height	20 feet when fully extended; lights operate at any height
Batteries	400 Ah, wired as a 24-volt system
Solar	600 W
Charger	40 A
Deployed footprint	158 × 83 in. (401 × 211 cm), L × W
Deployed height	236 in. (599 cm)
Travel height	108 in. (273 cm)
Weight, approx.	1550 lbs. (703 kg)

## Options

- 24/7 digital timer
- Fold-up drawbar

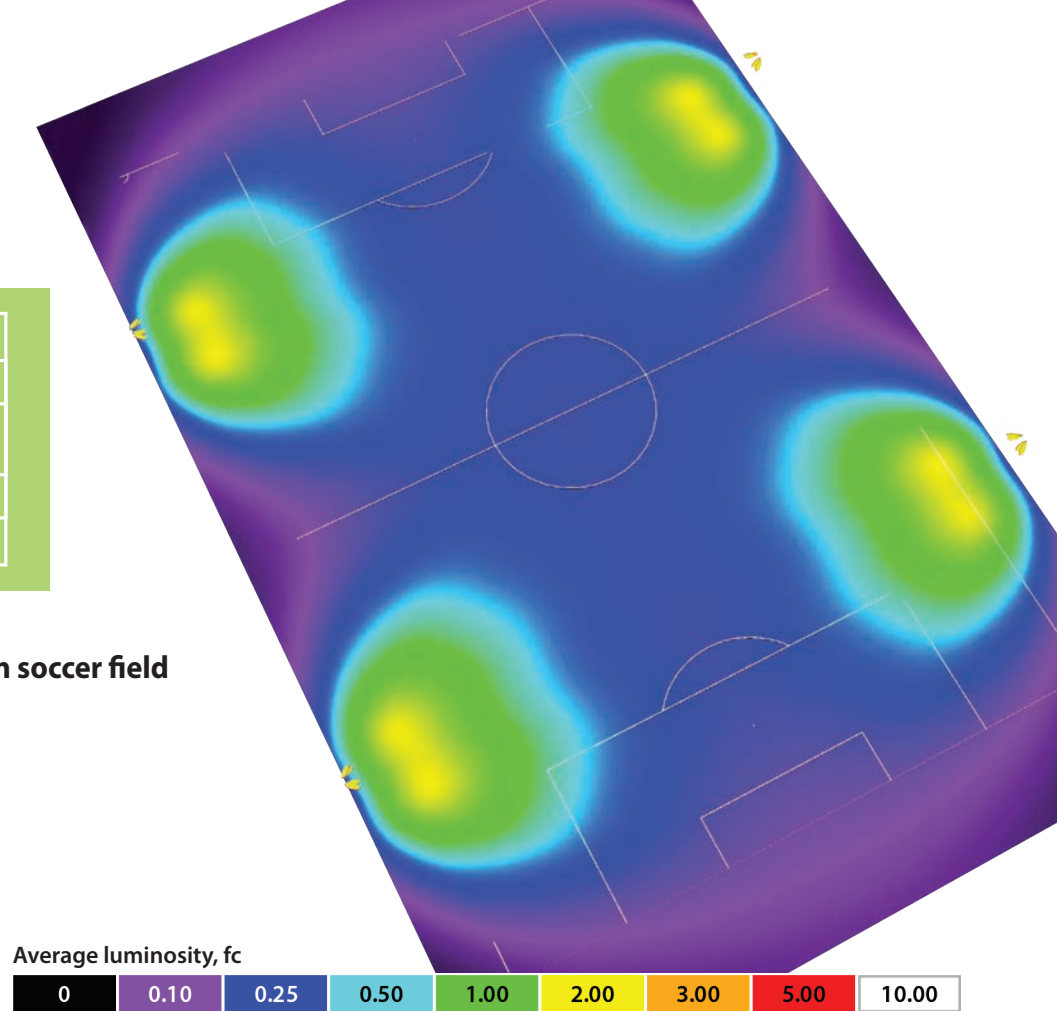






### Four light towers on a regulation soccer field

Lights	Four 60-watt fixtures per tower
Light height	20 ft.
Lighting area	400 × 250 ft.
Total acreage	2.2960
Luminosity	0.43 fc average across entire area

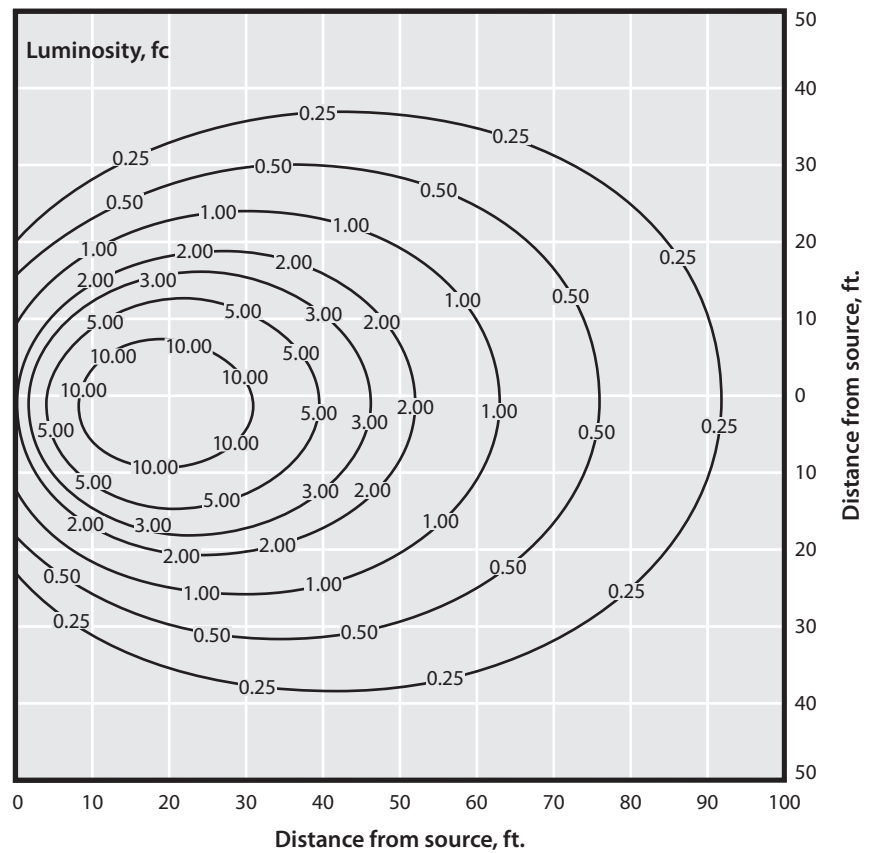
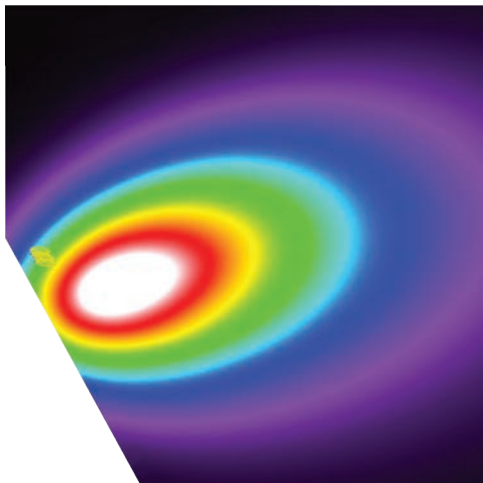


Average luminosity, fc



### Single light tower isolines

Lights	Four 60-watt fixtures
Light height	20 ft.
Lighting area	100 × 90 ft.
Total acreage	0.2066
Luminosity	1.24 fc average across entire area



# Medium Solar Light Towers

- Four high-output LED lights on 20-foot tower
- Long run times
- Automatic and manual operating modes
- Battery powered and solar charged
- Maintenance-free AGM batteries

Wanco's Medium Solar Light Towers provide bright lighting for areas up to 9,900 square feet, with longer run times than our small light tower. Common applications include overflow parking lots, small construction sites, material staging areas and freight yards.

These light towers feature four high-efficiency, high-output LED light fixtures that provide twice the light of our small light tower. The 20-foot telescoping tower rotates nearly 360 degrees without lowering the lights, which operate at any height. The lights can be individually aimed without the use of tools, and they stay where you point them. The tower remains vertical at all times, and the trailer's low center of gravity keeps the tower stable.

Batteries provide power and an automated solar-based charging system keeps the batteries charged. Functions include manual control and a choice of automatic modes that include dusk-to-dawn operation. Autonomous operation is possible from spring through fall in most locations.

## Brief specifications

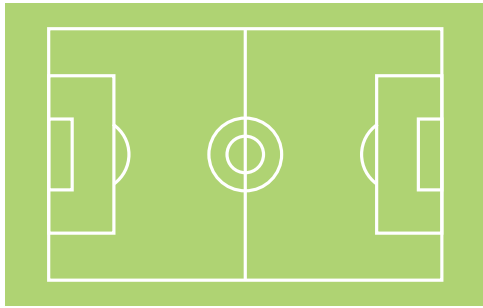
Lights	Four adjustable light fixtures
Luminosity	13,500 lumens per fixture 54,000 total lumens
Coverage area	9900 sq. ft.
Power draw	100 watts per light fixture
Light height	20 feet when fully extended; lights operate at any height
Batteries	800 Ah, wired as a 24-volt system
Solar	1050 W
Charger	40 A
Deployed footprint	181 × 111 in. (460 × 282 cm), L × W
Deployed height	236 in. (599 cm)
Travel height	108 in. (273 cm)
Weight, approx.	1900 lbs. (862 kg)

## Options

Light fixtures	Four 60 W Four 100 W*
Batteries	Four AGM, 400 Ah total capacity Eight AGM, 800 Ah total capacity*
Solar	600, 900 or 1050* watts

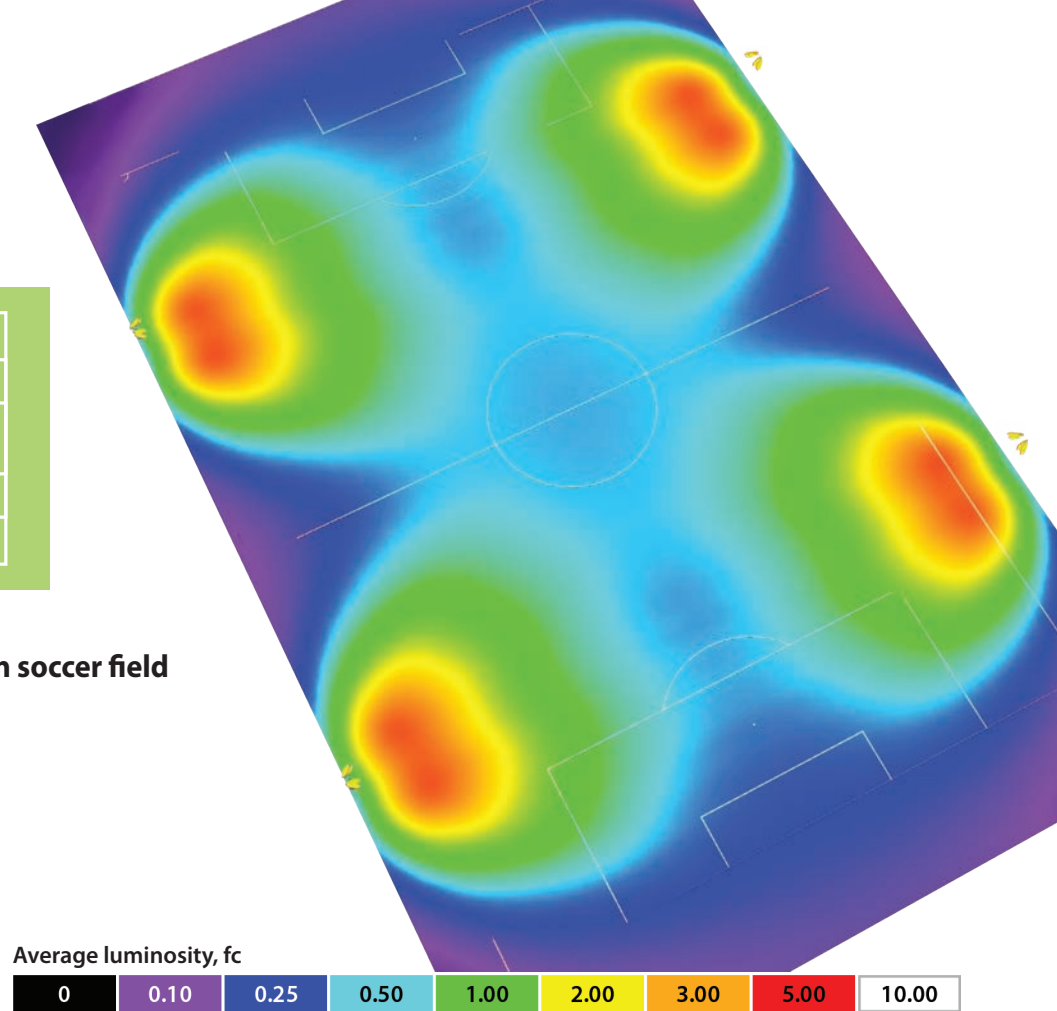
\*Pictured





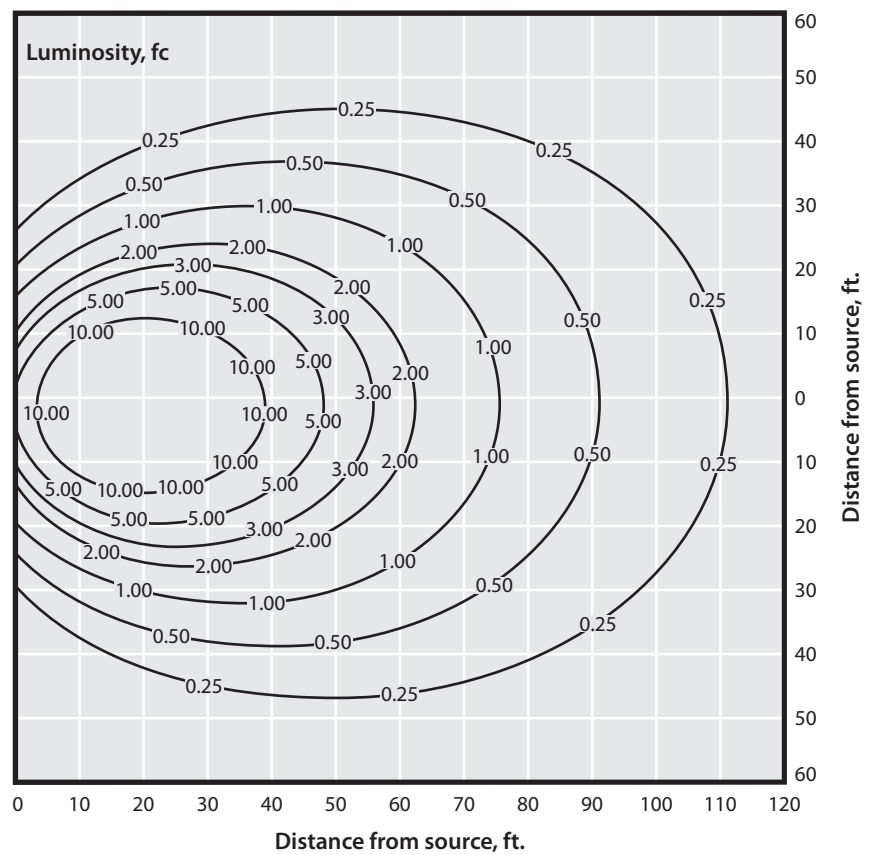
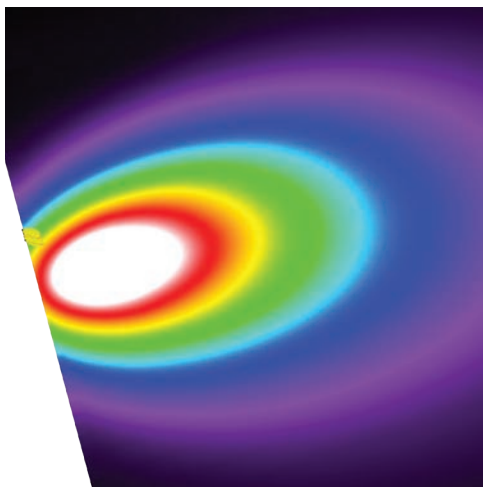
### Four light towers on a regulation soccer field

Lights	Four 100-watt fixtures per tower
Light height	20 ft.
Lighting area	400 × 250 ft.
Total acreage	2.2960
Luminosity	0.87 fc average across entire area



### Single light tower isolines

Lights	Four 100-watt fixtures
Light height	20 ft.
Lighting area	120 × 110 ft.
Total acreage	0.3030
Luminosity	2.28 fc average across entire area





# Large Solar Light Towers

- 4 or 8 high-output LED fixtures on 30-foot tower
- Year-round autonomous operation
- Automatic and manual operating modes
- Maintenance-free AGM batteries
- Large NEMA control box

Wanco's Large Solar Light Towers are our biggest and most powerful, providing extremely bright lighting with long run times for areas up to 23,100 square feet. Common applications include pit mining, large construction sites expansive parking lots and freight yards.

These light towers feature eight high-efficiency, high-output LED light fixtures on a 30-foot telescoping tower for broad coverage. The tower rotates nearly 360 degrees without lowering the lights, which operate at any height. Lights can be individually aimed without tools, and they stay where you point them. The tower remains vertical at all times, and the trailer's low center of gravity keeps the tower stable.

Batteries provide power and an automated solar-based charging system keeps the batteries charged. Functions include manual control and a choice of automatic modes that include dusk-to-dawn operation. Autonomous operation is possible year-round in most locations.

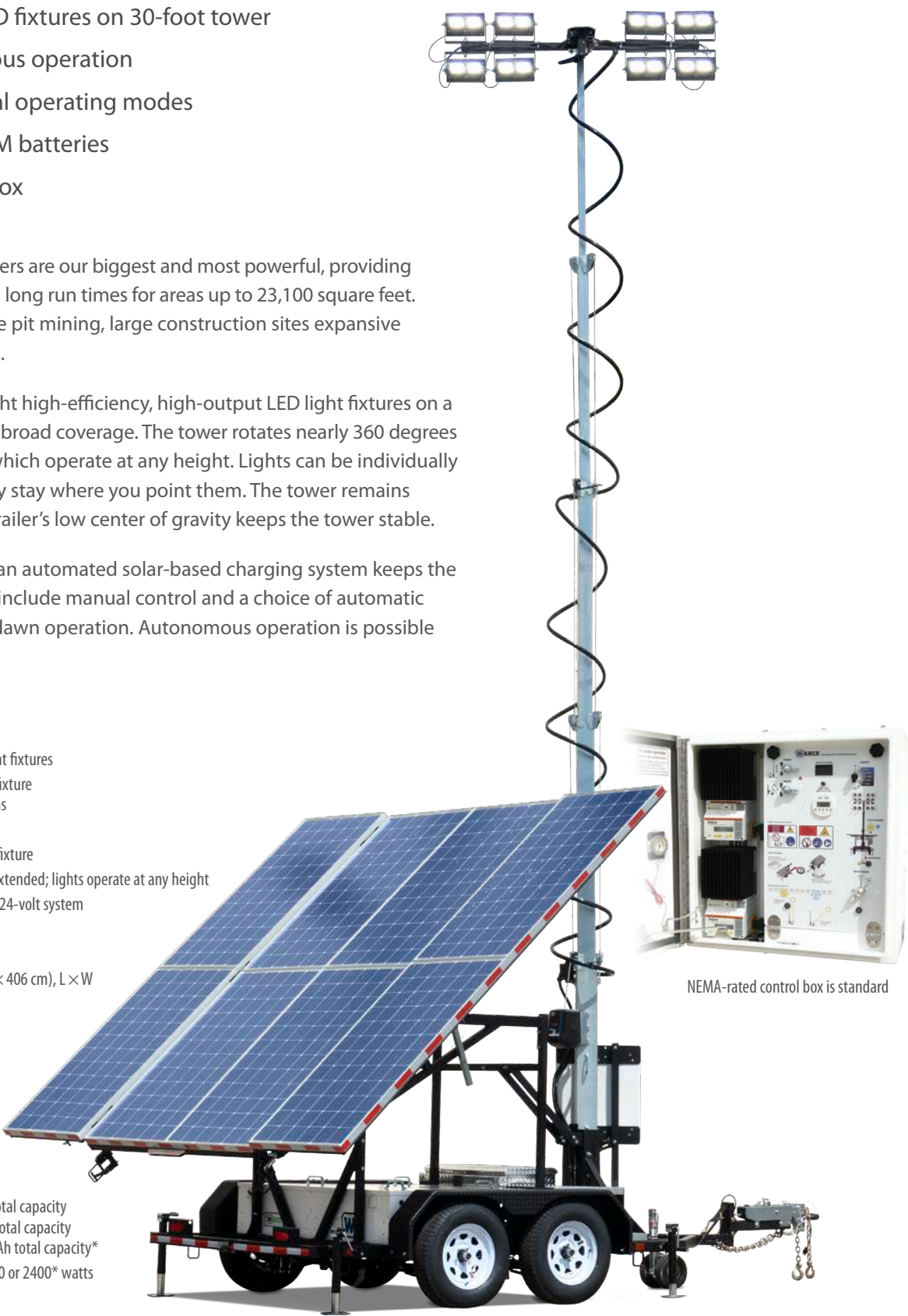
## Brief specifications

Lights	Eight adjustable light fixtures
Luminosity	13,500 lumens per fixture 108,000 total lumens
Coverage area	23,100 sq. ft.
Power draw	100 watts per light fixture
Light height	30 feet when fully extended; lights operate at any height
Batteries	1600 Ah, wired as a 24-volt system
Solar	2400 W
Charger	40 A
Deployed footprint	217 × 160 in. (551 × 406 cm), L × W
Deployed height	354 in. (899 cm)
Travel height	115 in. (292 cm)
Weight, approx.	4800 lbs. (2,177 kg)

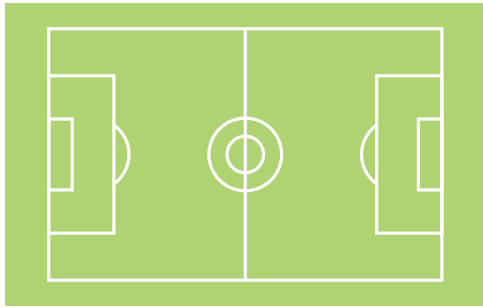
## Options

Light fixtures	Four 60 W Four 100 W Eight 100 W*
Batteries	Four AGM, 400 Ah total capacity Eight AGM, 800 Ah total capacity Sixteen AGM, 1600 Ah total capacity*
Solar	600, 900, 1200, 1500 or 2400* watts

\*Pictured

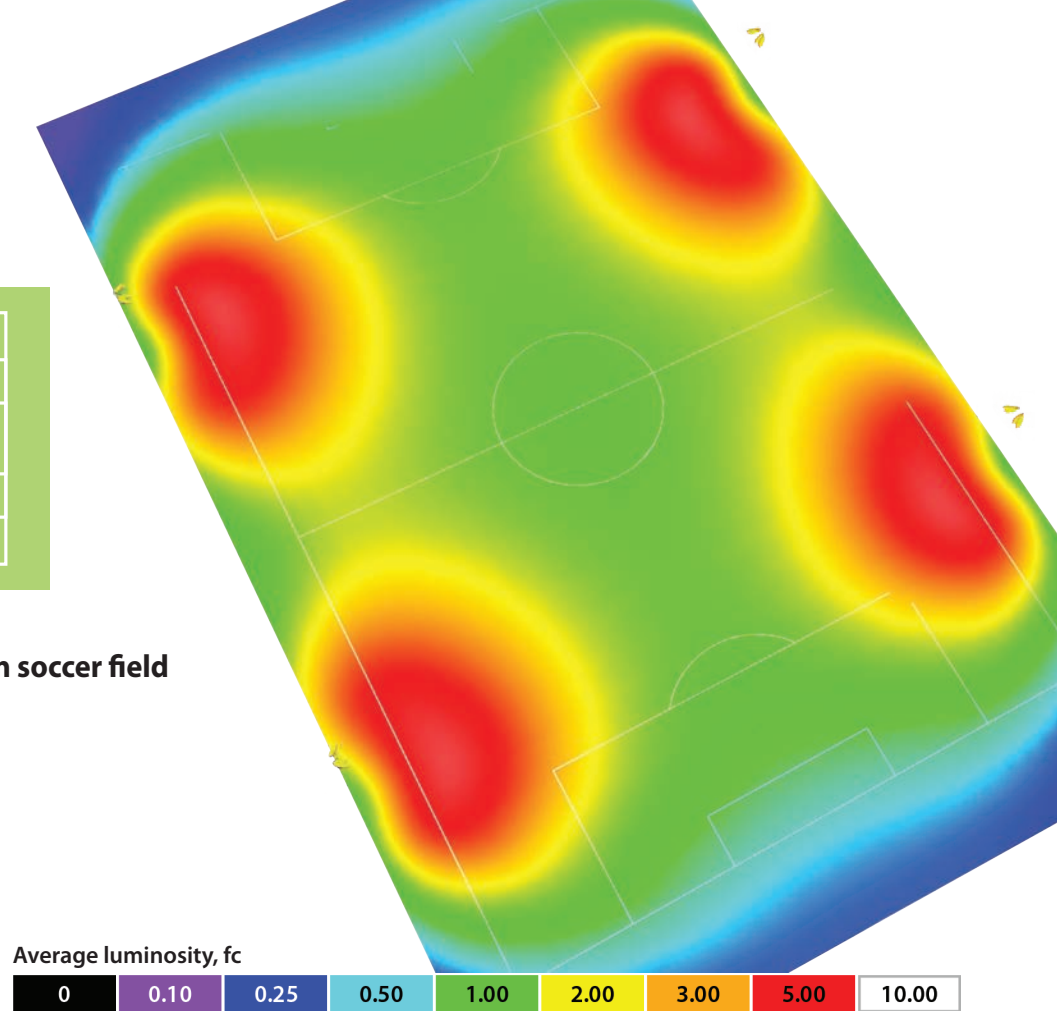


NEMA-rated control box is standard



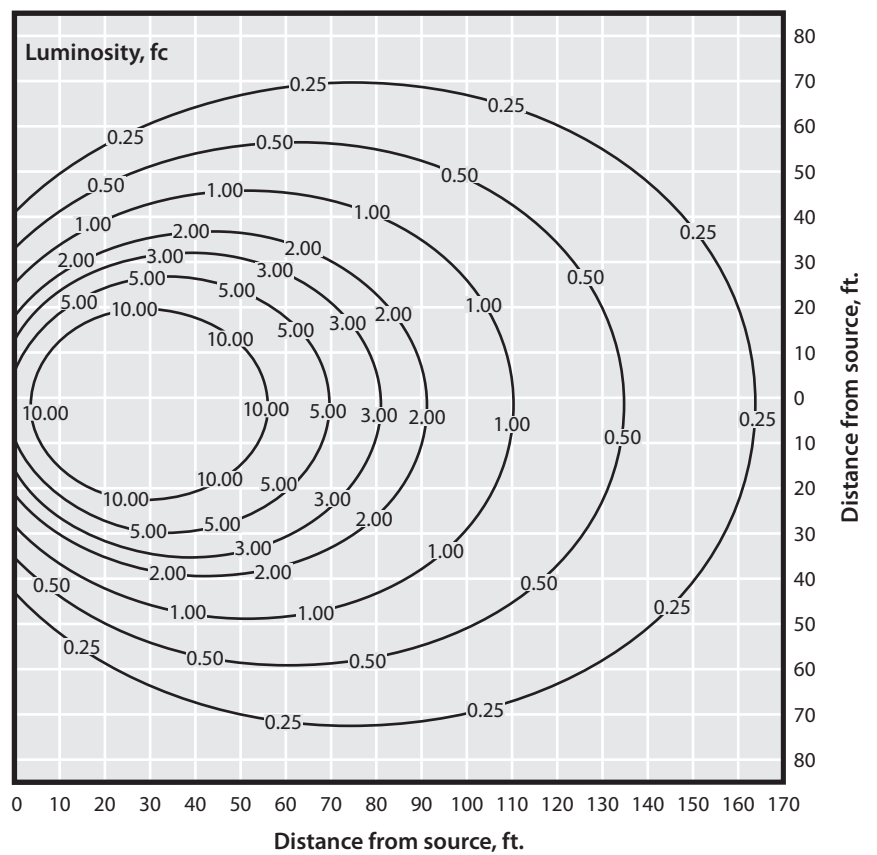
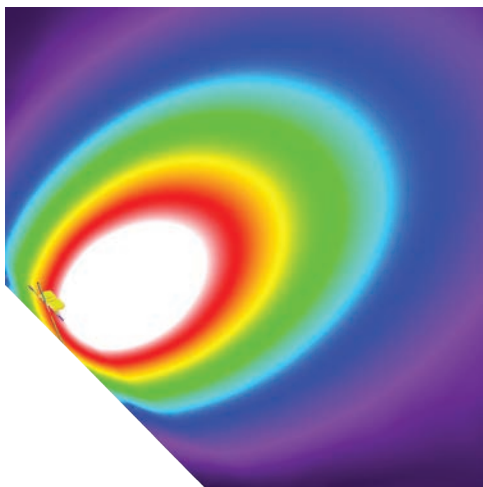
### Four light towers on a regulation soccer field

Lights	Eight 100-watt fixtures per tower
Light height	30 ft.
Lighting area	400 × 250 ft.
Total acreage	2.2960
Luminosity	2.10 fc average across entire area



### Single light tower isolines

Lights	Eight 100-watt fixtures
Light height	30 ft.
Lighting area	170 × 150 ft.
Total acreage	0.5854
Luminosity	2.38 fc average across entire area



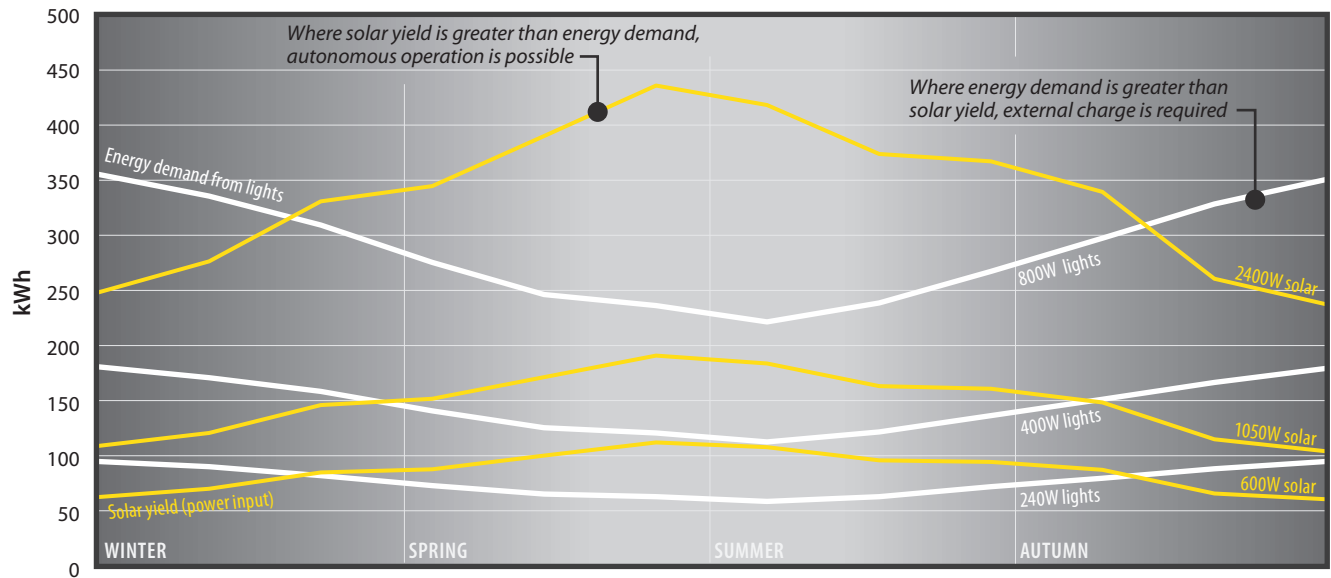
## Recommended brightness

Choose the brightness that suits your needs. Typical recommended light levels, based on Illuminating Engineering Society (IES) documents except where noted:

General construction, 10 fc	Haul roads, 0.5 to 1 fc
Self-parking, 1 fc	Flagger, 5 fc (per MUTCD)
Active industrial yards, 5 fc	Quarries & pit mines, 5 fc

## Energy demand vs. solar yield\*

Choose the appropriate combination of solar power and lights for the performance you require.



\*Curves are representative of dusk-to-dawn operation. Charts for your application and location are available from the factory.



# LED Balloon Lights

Light Carts • Tripod Stands • Light Towers



# Compact LED balloon lights for bright, diffused area lighting

- Glare-free 360° illumination
- Reduced and diffused shadows
- Steerable heavy-duty cart with 16-foot tower
- Telescoping tripod stand rises to 12 feet
- Independent inverter power generator is optional

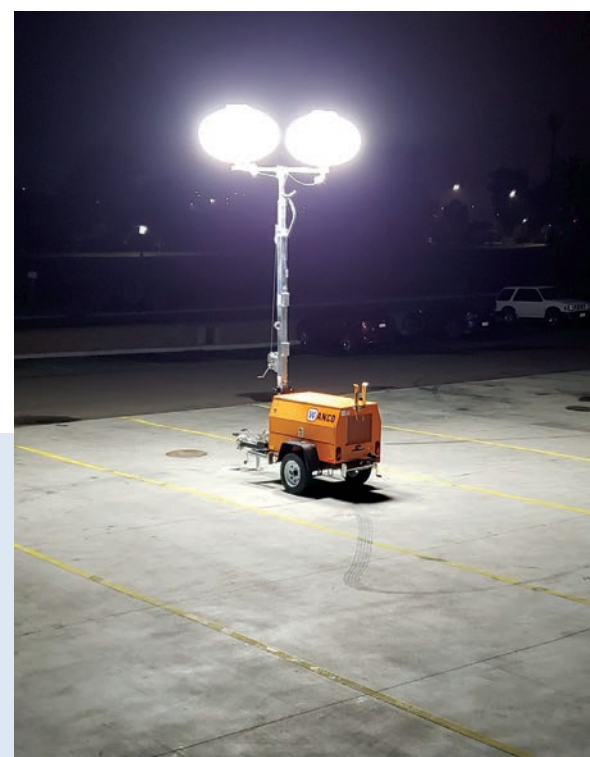
Wanco® LED Balloon Lights are a compact solution for your work area lighting. Their small size and ease of use translate to portability and quick deployment.

The Balloon Light Cart features a built-in handle, steerable wheels, flat-free all terrain tires and foot-operated parking brake. With outriggers deployed, the heavy-duty steel base and low center of gravity keep the light stable. The Balloon Tripod Stand is easy to carry and deploys in seconds. Both options meet DOT specifications for diffused lighting. Dual balloon fixtures are available on Wanco diesel light towers.

The durable LED balloon light provides balanced glare-free lighting in all directions. The light goes on and the balloon inflates with a single switch. The light uses commercial power indoors or out, or a Wanco Inverter Generator when used outdoors. A built-in cover protects the balloon during transport.

## Common applications

- Road construction
- Police checkpoints
- Emergency repairs
- Disaster response
- Search and rescue
- Special events



## Brief specifications

### Balloon light

Light type	LED
Color temperature	5000K
Luminosity	65,000 lm, 360° beam angle
Power draw	650 watts
Input voltage	120/240 Vac
Operating current	5.5 A @ 120 Vac
Balloon size, W × H	40 × 29 in (100 × 73 cm) inflated
Light fixture weight, approx.	22 lb (10 kg)

### Balloon Light Cart

Deployed footprint, L × W	60 × 72 in (152 × 183 cm)
Deployed height, max.	18 ft 5 in (5.61 m)
Travel size, L × W × H	48 × 32 × 96 in (122 × 81 × 244 cm)
Weight, approx.	300 lb (136 kg)

### Balloon Light Tripod

up to 50 × 59 in (127 × 150 cm)
13 ft 10 in (4.17 m)
112 × 12 × 12 in (285 × 31 × 31 cm)
27 lb (12 kg)

### Dual-Light Light Tower

127 × 112 in (321 × 285 cm)
30 ft 9 in (9.37 m)
176 × 47 × 66 in (448 × 119 × 168 cm)
1570 lb (712 kg)

Архангельск (8182)63-90-72  
Астана (7172)727-132  
Астрахань (8512)99-46-04  
Барнаул (3852)73-04-60  
Белгород (4722)40-23-64  
Брянск (4832)59-03-52  
Владивосток (423)249-28-31  
Волгоград (844)278-03-48  
Вологда (8172)26-41-59  
Воронеж (473)204-51-73  
Екатеринбург (343)384-55-89  
Иваново (4932)77-34-06

Ижевск (3412)26-03-58  
Иркутск (395)279-98-46  
Казань (843)206-01-48  
Калининград (4012)72-03-81  
Калуга (4842)92-23-67  
Кемерово (3842)65-04-62  
Киров (8332)68-02-04  
Краснодар (861)203-40-90  
Красноярск (391)204-63-61  
Курск (4712)77-13-04  
Липецк (4742)52-20-81  
Киргизия (996)312-96-26-47

Магнитогорск (3519)55-03-13  
Москва (495)268-04-70  
Мурманск (8152)59-64-93  
Набережные Челны (8552)20-53-41  
Нижний Новгород (831)429-08-12  
Новокузнецк (3843)20-46-81  
Новосибирск (383)227-86-73  
Омск (3812)21-46-40  
Орел (4862)44-53-42  
Оренбург (3532)37-68-04  
Пенза (8412)22-31-16  
Россия (495)268-04-70

Пермь (342)205-81-47  
Ростов-на-Дону (863)308-18-15  
Рязань (4912)46-61-64  
Самара (846)206-03-16  
Санкт-Петербург (812)309-46-40  
Саратов (845)249-38-78  
Севастополь (8692)22-31-93  
Симферополь (3652)67-13-56  
Смоленск (4812)29-41-54  
Сочи (862)225-72-31  
Ставрополь (8652)20-65-13  
Казахстан (772)734-952-31

Сургут (3462)77-98-35  
Тверь (4822)63-31-35  
Томск (3822)98-41-53  
Тула (4872)74-02-29  
Тюмень (3452)66-21-18  
Ульяновск (8422)24-23-59  
Уфа (347)229-48-12  
Хабаровск (4212)92-98-04  
Челябинск (351)202-03-61  
Череповец (8202)49-02-64  
Ярославль (4852)69-52-93