

Архангельск (8182)63-90-72
Астана (7172)727-132
Астрахань (8512)99-46-04
Барнаул (3852)73-04-60
Белгород (4722)40-23-64
Брянск (4832)59-03-52
Владивосток (423)249-28-31
Волгоград (844)278-03-48
Вологда (8172)26-41-59
Воронеж (473)204-51-73
Екатеринбург (343)384-55-89
Иваново (4932)77-34-06

Ижевск (3412)26-03-58
Иркутск (395)279-98-46
Казань (843)206-01-48
Калининград (4012)72-03-81
Калуга (4842)92-23-67
Кемерово (3842)65-04-62
Киров (8332)68-02-04
Краснодар (861)203-40-90
Красноярск (391)204-63-61
Курск (4712)77-13-04
Липецк (4742)52-20-81

Киргизия (996)312-96-26-47

Магнитогорск (3519)55-03-13
Москва (495)268-04-70
Мурманск (8152)59-64-93
Набережные Челны (8552)20-53-41
Нижний Новгород (831)429-08-12
Новокузнецк (3843)20-46-81
Новосибирск (383)227-86-73
Омск (3812)21-46-40
Орел (4862)44-53-42
Оренбург (3532)37-68-04
Пенза (8412)22-31-16

Россия (495)268-04-70

Пермь (342)205-81-47
Ростов-на-Дону (863)308-18-15
Рязань (4912)46-61-64
Самара (846)206-03-16
Санкт-Петербург (812)309-46-40
Саратов (845)249-38-78
Севастополь (8692)22-31-93
Симферополь (3652)67-13-56
Смоленск (4812)29-41-54
Сочи (862)225-72-31
Ставрополь (8652)20-65-13

Казахстан (772)734-952-31

Сургут (3462)77-98-35
Тверь (4822)63-31-35
Томск (3822)98-41-53
Тула (4872)74-02-29
Тюмень (3452)66-21-18
Ульяновск (8422)24-23-59
Уфа (347)229-48-12
Хабаровск (4212)92-98-04
Челябинск (351)202-03-61
Череповец (8202)49-02-64
Ярославль (4852)69-52-93

<http://wanco.nt-rt.ru> | wca@nt-rt.ru

The original mobile security solution.

Wanco Portable Video Surveillance Systems make your community safer. Deploy our systems anywhere for reliable, unmanned, 24/7 protection of high-incident areas, transportation routes, construction sites and critical infrastructure. All of our systems feature rapid deployment, quick setup and ease of use. Tow, deploy and leave them—they are ready to stop and catch thieves, vandals and other would-be criminals.



Solar Integrator Trailer

Common applications:

- Commercial
- Industrial
- Residential
- Government
- Law enforcement

see page 4



Mini Solar Surveillance

Common applications:

- Real estate developments
- Commercial construction
- Residential construction
- Parking lots
- Schools

see page 6

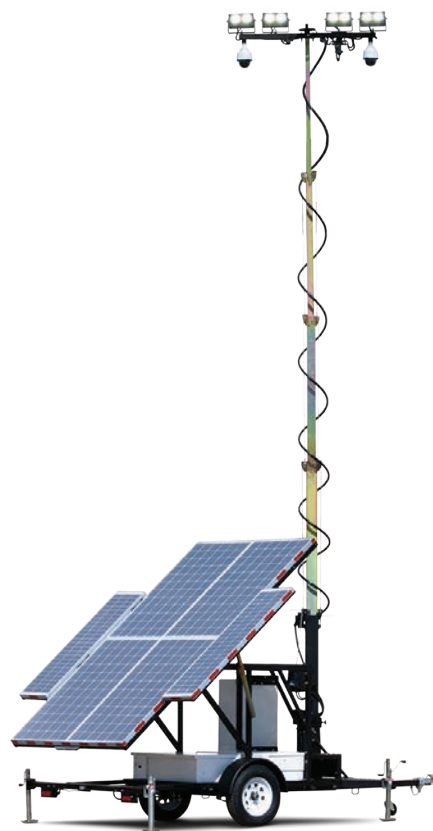


Solar Surveillance Systems

Common applications:

- Law enforcement
- Long-term deployments
- Military
- Remote sites
- Oil & gas operations

see page 8





Solar PVS

Common applications:

- Law enforcement
- Homeland Security
- Military
- Airports
- Integrators

see page 9

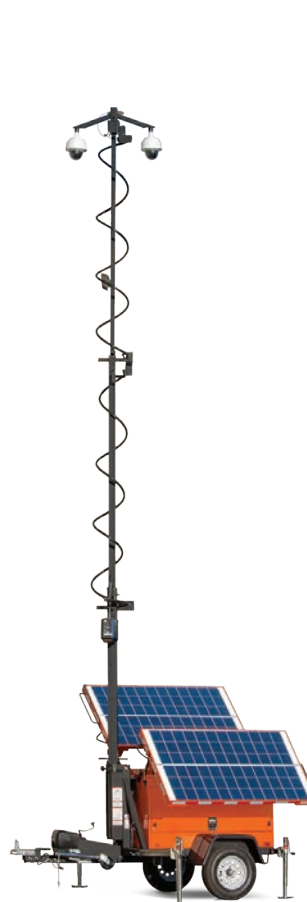


Diesel PVS

Common applications:

- Law enforcement
- University campuses
- Large event facilities
- Long-term deployments
- Oil & gas operations

see page 10



Traffic PVS & Traffic RVMS

Common applications:

- DOTs
- Traffic engineering
- ITS platforms
- Law enforcement
- Parks and recreation



Solar Integrator Trailer

Add gear as needed

Built-in power system

Silent operation

Solar arrays up to 1050 watts

Compact and easy to transport

Wanco's Solar Integrator Trailer provides a robust, dependable platform for you to install your own gear.

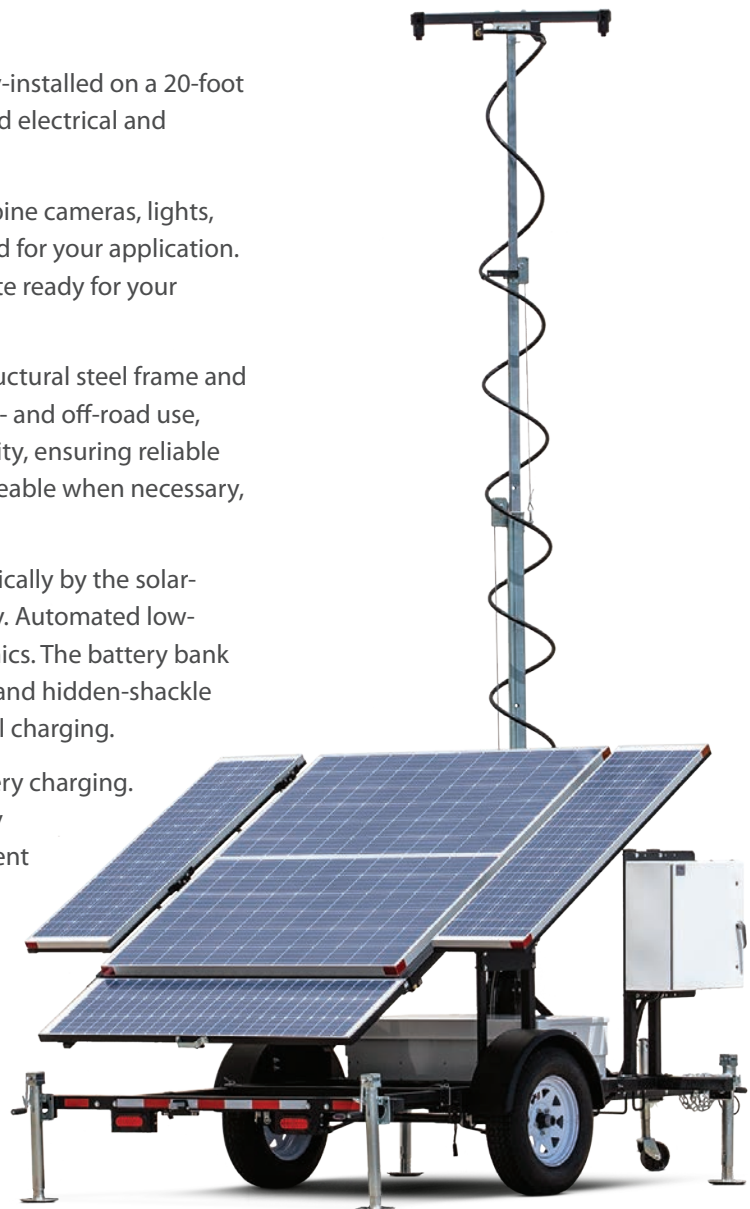
Installing your own equipment is easy, with cabling factory-installed on a 20-foot telescoping tower that rotates nearly 360 degrees. Standard electrical and mechanical connectors make installation simple and easy.

Ready for customizing, this durable platform lets you combine cameras, lights, recording devices, PA systems and more—anything needed for your application. A lockable NEMA-rated enclosure is prewired and back plate ready for your electronics and controls.

The Integrator Trailer is built to last, with a heavy-grade structural steel frame and a reliable power system. Wanco trailers are designed for on- and off-road use, and components are chosen for durability and dependability, ensuring reliable operation and long lifespan. Many components are replaceable when necessary, such as the trailer's bolt-on steel fenders.

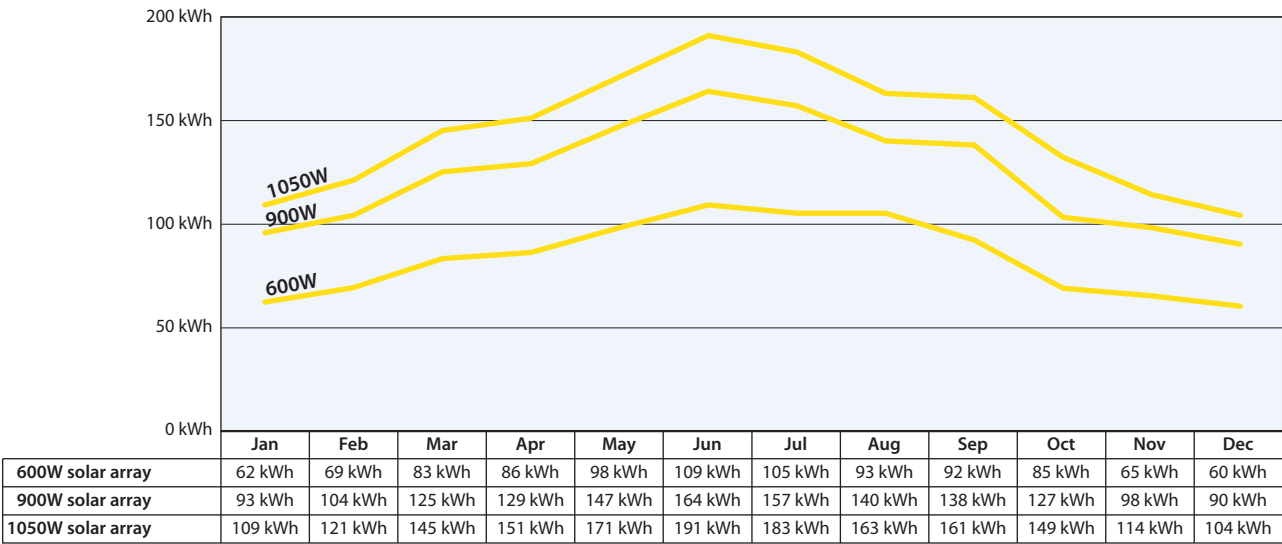
Power is supplied by batteries, which are charged automatically by the solar-based charging system. The power system operates silently. Automated low-voltage shutdown protects batteries and sensitive electronics. The battery bank is housed in a high-security enclosure with hidden hinges and hidden-shackle padlocks. The solar array features adjustable-tilt for optimal charging.

The solar array provides input power (solar yield) and battery charging. Locations with plenty of sun can see autonomous or nearly autonomous operation year-round depending on equipment power demands (see solar yield chart). Locations with less sun, and applications with high power needs, may require additional solar or battery capacity.



WCTS Integrator

Solar yield example for Denver, Colorado



Choose a solar option to match the power demands of your equipment.

Base platform

- Rugged trailer built for integrators
- All welded structural steel frame
- Telescoping 20-foot tower with cable attached
- Onboard power with automatic charging system
- Electronics housed in locking weather-tight enclosure
- Nycoil® cable protection is optional

Power options

- 12 Vdc AGM batteries wired for 24 volts, your choice of 400 Ah or 800 Ah total capacity, 40 A AC charger included
- 600 W, 900 W, or 1050 W solar array
- Solar array tilts from horizontal to 90° vertical

Control box

- Back plate ready for installation of your electronics
- Aluminum enclosure measures 24 inches square and 10 inches deep
- Latch accepts user-supplied padlock

Add Your Own Gear

- Add your own cameras and accessories as needed
- Tower has two 1½-inch NPT connectors for pendant-style cameras
- Tower cable includes three CAT5, one 16/2, one ground
- Options include mounts for more cameras and other equipment
- LED light fixtures are optional



Control box wired and ready for installing electronics



1050-watt base platform in travel position

Mini Solar Surveillance System

Integrated camera and electronics

20-foot vertical tower

Year-round autonomous operation

Compact and easy to transport

Silent operation

Wanco's Mini Solar Surveillance System features a unique all-in-one design in which all electronics are integrated in the camera housing.

At the top of the 20-foot telescoping tower is the camera system, which is specifically designed for outdoor use. A one-piece camera housing comprises all electronics for this remotely accessible live-video solution—including an NVR for storing recorded video and a cellular modem for wireless access. Remote control lets you view video and control the pan-tilt-zoom camera from any Internet-connected device. A choice of cellular service plans is included.

Power is provided by batteries, which are charged by the solar-based charging system. In a typical deployment with sufficient sunlight, the system can run continuously and independently year-round.

Features

One or two outdoor IP-network cameras

Cameras are day/night PTZ dome style with 360° rotation

Optional primary-secondary configuration adds a second camera at low cost

Video resolution of 1028 × 596 or HD 1080p

20x optical zoom / 16x digital zoom

Onboard digital recording to solid-state NVR

High-speed 4G LTE cellular modem with built-in GPS

Cellular plan included

LAN Wi-Fi® connectivity, 2.4 or 5.8 GHz

IR dome cameras are optional

Convenient onboard storage for cameras

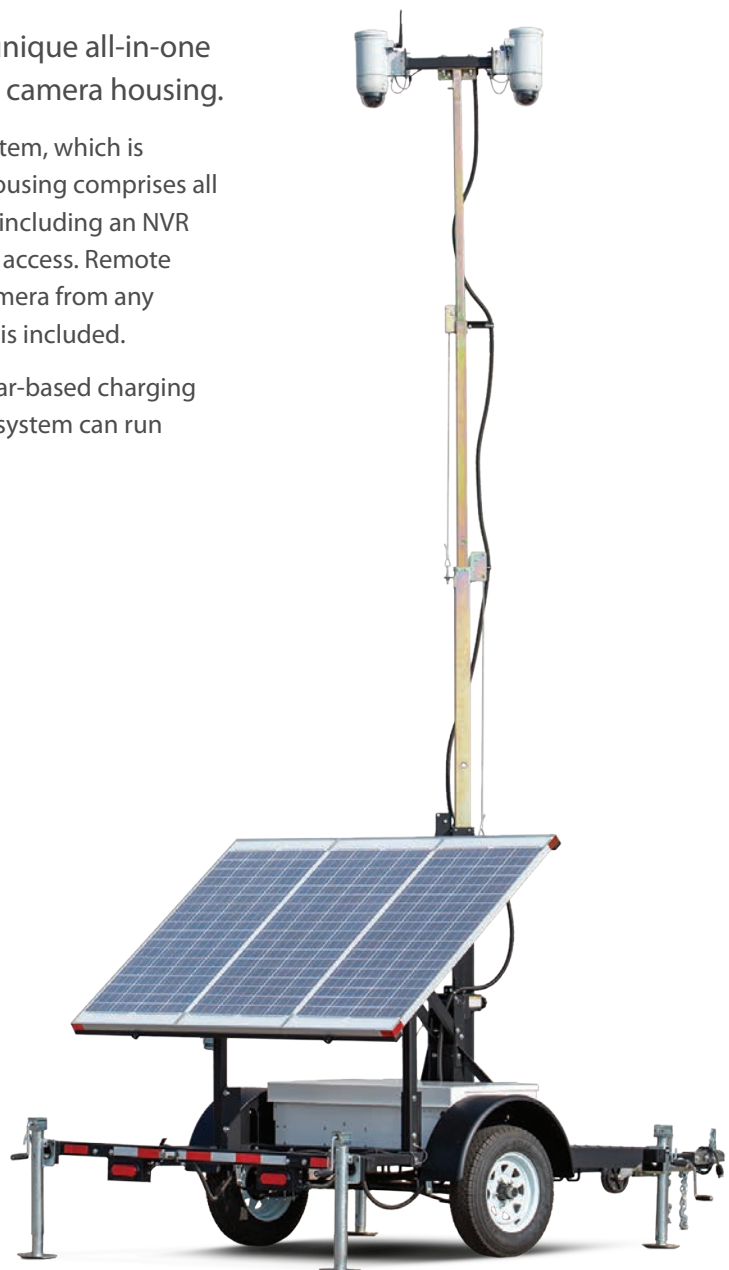
20-foot telescoping vertical tower rotates nearly 360 degrees

Maintenance-free sealed batteries housed in secure, tamper-resistant battery box

Solar array tilts from horizontal to nearly 90° vertical

Compact trailer can be towed by most vehicles and fits in tight locations

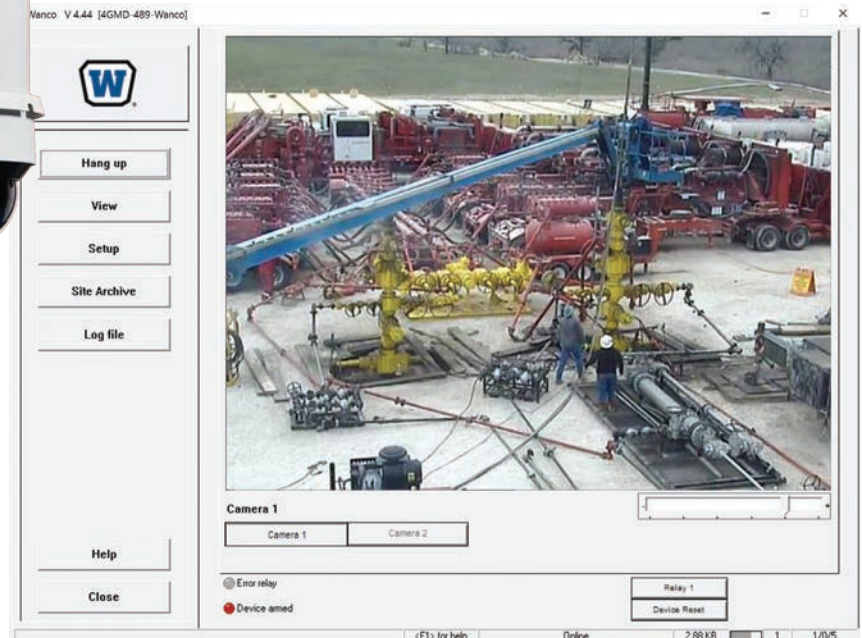
Removable drawbar is standard, folding drawbar is optional



WCTS-Mini

An optional infrared camera is specifically designed for mobile video surveillance applications. It combines an infrared PTZ camera with local recording capacity and wireless transmission technology in a single, compact unit.

The system offers optional video analytics that provide visual verification and email alarms for a range of intelligent surveillance applications. Autotracking allows automated monitoring.



Camera Control

Live video stream via 4G cellular or Wi-Fi

Multiple device connectivity

Zero latency PTZ control

Send and receive alarms and relay commands

License free, multi-use software

Optional IR camera

Built-in IR illuminator for nighttime use

160-foot (50-meter) IR Illumination

1080p HD camera

20x optical zoom

360-degree pan, -5 to 90-degree tilt

Designed for use in no-light/low-light scenarios

4G cellular with Wi-Fi

Onboard NVR with recording up to 4TB

GPS location

Cellular plan included

Quick-connectors and lock-pin for easy installation



Cameras stow safely inside the high-security battery box for transport and storage



Travel position with cameras stowed inside secure battery box

Solar Surveillance Systems

PTZ dome cameras

20- and 30-foot vertical towers

Onboard solid-state NVR with monitor

High-capacity battery and solar power

Lots of optional add-ons

Wanco's Solar Surveillance Systems includes all the technology you expect, integrated in a portable solar-based platform.

This system includes full-featured PTZ cameras, onboard power, an expandable electronics bay and more. The day/night cameras capture high-resolution video, which can be accessed locally or remotely. Video can be viewed in real time or recorded and stored on the onboard NVR. For increased flexibility, choose from a wide assortment of additional options including LED lights and IR illuminators.

Power is provided by batteries, which are charged by the solar-based charging system. In a typical deployment with sufficient sunlight, the system can run continuously and independently year-round.

Features

One or two outdoor IP-network cameras

Cameras are day/night PTZ dome style with 360° rotation

Axis®, Vicon®, WCCTV and other cameras available

Add optional LED light fixtures, IR illuminators and more

Cameras and add-on devices can operate independently or simultaneously

Onboard digital recording to solid-state NVR

Secure control cabinet houses color touchscreen monitor and electronics

High-speed 4G LTE cellular modem* with built-in GPS

Multiple antenna types for the signal power and distance you need

Electronics housed in locking NEMA-rated enclosure

Telescoping vertical tower rotates nearly 360 degrees

20-foot or 30-foot tower, depending on model

Nycoil® cable protection is optional

Maintenance-free sealed batteries housed in secure, tamper-resistant battery box

Solar array tilts from horizontal to nearly 90° vertical

**Requires cellular plan*



WCTS Series

Solar PVS System

Industry leading tamper-resistance

Designed for use in unprotected areas

Perfect for long-term deployments

Local and remote control

Provides unmanned 24/7 presence

Wanco's Portable Video Surveillance (PVS) System provides remote site monitoring in a robust, self-contained unit.

Rugged and dependable, this system features expanded capabilities with virtually any type of industrial- and military-grade components installed. The system is fully self-contained and self-sustaining, with onboard power, tamper-resistant features and wireless remote communications.

Access live and recorded video remotely, or through the integrated control center. Control cameras and other devices, and receive programmed event alerts, all in real time.

Features

Multiple outdoor IP-network cameras

Cameras are day/night PTZ dome style with 360° rotation

Axis, Vicon, WCCTV and other cameras available

Radar sensors, motion sensors and IR illumination are optional

All devices operate independently or simultaneously

Industrial- and military-grade components

Onboard digital recording to solid-state NVR

Secondary secure control cabinet houses 12-inch color monitor, keyboard and mouse

High-speed 4G LTE cellular modem* with built-in GPS and optional Wi-Fi

Multiple antenna types for the signal power and distance you need

26-foot or 30-foot telescoping pivoting tower

Cables secure in Nycoil conduit and not accessible to vandals from ground level

Electronics and power system housed in best-in-class steel enclosure with more than 16 individual locking points

1000 Ah or 1500 Ah battery bank, sealed maintenance-free AGM batteries

Solar array tilts and locks in place for optimum exposure

**Requires cellular plan*



WCTB4S

Diesel PVS System

Industry leading tamper-resistance

Designed for use in unprotected areas

Ultra-quiet, auto-start diesel power

Local and remote control

Provides unmanned 24/7 presence

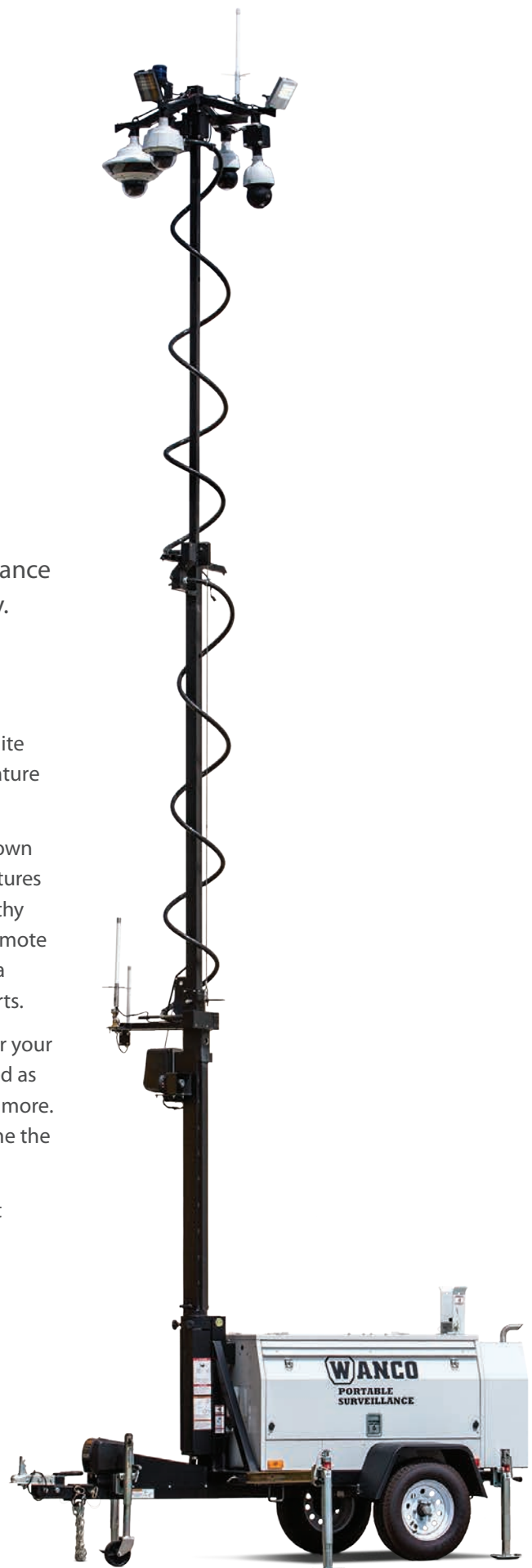
Wanco's Diesel PVS System is the original mobile surveillance solution, designed for durability, longevity and reliability.

Our top-of-the-line Portable Video Surveillance (PVS) System is fully engineered to provide superior performance, with components that work together as a fully integrated system. The Wanco PVS System uses only industrial- and military-grade components, designed by elite manufacturers specifically to withstand the rigors of travel, temperature extremes and harsh environments.

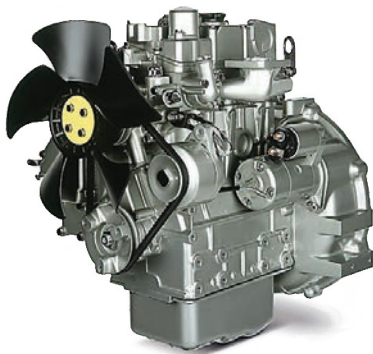
The Wanco Diesel PVS System is completely self-contained with its own power, recording and communications systems. Tamper-resistant features and wireless remote control support autonomous operation for lengthy deployments. The digital video recording system allows local and remote viewing and recording, and the advanced-analytics package offers a wider range of functionality, including violated-area alarms and alerts.

The system is also modular, which lets us customize it specifically for your application. Additional and alternative sensing devices can be added as needed, including motion detectors, thermal imaging cameras and more. We take your specifications, analyze your requirements, and combine the components best suited for the job into a complete system.

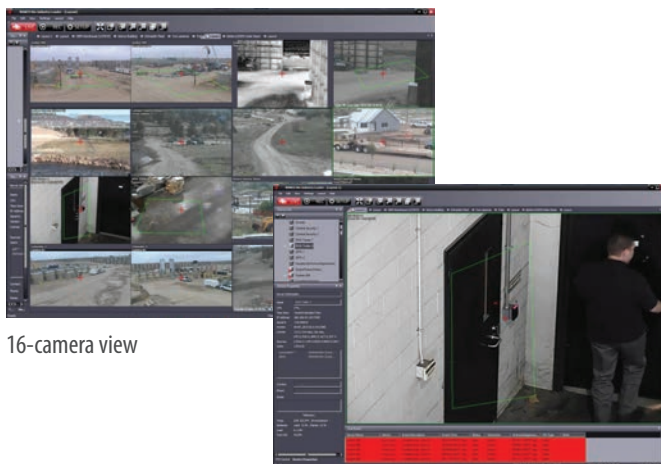
Wanco PVS deploys quickly and easily, and almost anyone can use it without extensive training.



WCT-PX



You can rely on the robust, industrial-grade Perkins® power plant. Its top-flight engineering ensures dependable, optimized performance. The ultra-quiet, low-speed diesel engine charges the batteries that provide system power, and an auto-start controller conserves fuel by running the engine only when needed for keeping the batteries fully charged. The system can typically run 30 days or more on a single tank of fuel.



16-camera view

Single camera view

Features

- Multiple outdoor IP-network cameras
- Cameras are day/night PTZ dome style with 360° rotation
- Axis, Vicon, WCCTV and other cameras available
- Thermal cameras, radar units, motion sensors and IR illumination are optional
- All devices operate independently or simultaneously
- Industrial- and military-grade equipment
- Onboard digital recording to solid-state NVR
- Secondary secure control cabinet houses 12-inch color monitor, keyboard and mouse
- High-speed 4G LTE cellular modem* with built-in GPS and optional Wi-Fi
- Wi-Fi and many radio options to choose from
- Multiple antenna types for the signal power and distance you need
- 30-foot telescoping pivoting tower with Nycoil cable protection
- No wires or cables accessible from ground level
- Electronics and power system housed in best-in-class steel enclosure with 16 individual locking points
- Maintenance-free sealed AGM batteries housed in tamper-resistant enclosure

*Requires cellular plan



Take full control of your video surveillance from anywhere, quickly and easily with Artec NEXT. This advanced technology design makes it easy to retrieve video, directly manage alarms, perform video analytics and access control events. Artec stands out as a leader in intelligent video solutions with real-time event notifications, advanced analytics, interactive mapping and much more. Artec NEXT integrates with leading monitoring control center software.



Travel position, options include flashing beacon and spare tire

Архангельск (8182)63-90-72
Астана (7172)727-132
Астрахань (8512)99-46-04
Барнаул (3852)73-04-60
Белгород (4722)40-23-64
Брянск (4832)59-03-52
Владивосток (423)249-28-31
Волгоград (844)278-03-48
Вологда (8172)26-41-59
Воронеж (473)204-51-73
Екатеринбург (343)384-55-89
Иваново (4932)77-34-06

Ижевск (3412)26-03-58
Иркутск (395)279-98-46
Казань (843)206-01-48
Калининград (4012)72-03-81
Калуга (4842)92-23-67
Кемерово (3842)65-04-62
Киров (8332)68-02-04
Краснодар (861)203-40-90
Красноярск (391)204-63-61
Курск (4712)77-13-04
Липецк (4742)52-20-81
Киргизия (996)312-96-26-47

Магнитогорск (3519)55-03-13
Москва (495)268-04-70
Мурманск (8152)59-64-93
Набережные Челны (8552)20-53-41
Нижний Новгород (831)429-08-12
Новокузнецк (3843)20-46-81
Новосибирск (383)227-86-73
Омск (3812)21-46-40
Орел (4862)44-53-42
Оренбург (3532)37-68-04
Пенза (8412)22-31-16
Россия (495)268-04-70

Пермь (342)205-81-47
Ростов-на-Дону (863)308-18-15
Рязань (4912)46-61-64
Самара (846)206-03-16
Санкт-Петербург (812)309-46-40
Саратов (845)249-38-78
Севастополь (8692)22-31-93
Симферополь (3652)67-13-56
Смоленск (4812)29-41-54
Сочи (862)225-72-31
Ставрополь (8652)20-65-13
Казахстан (772)734-952-31

Сургут (3462)77-98-35
Тверь (4822)63-31-35
Томск (3822)98-41-53
Тула (4872)74-02-29
Тюмень (3452)66-21-18
Ульяновск (8422)24-23-59
Уфа (347)229-48-12
Хабаровск (4212)92-98-04
Челябинск (351)202-03-61
Череповец (8202)49-02-64
Ярославль (4852)69-52-93

<http://wanco.nt-rt.ru> | wca@nt-rt.ru